

TECHNICAL MANUAL

ORGANIZATIONAL, DIRECT SUPPORT AND  
GENERAL SUPPORT MAINTENANCE  
REPAIR PARTS AND SPECIAL TOOLS LIST  
(INCLUDING DEPOT MAINTENANCE REPAIR  
PARTS AND SPECIAL TOOLS)

FOR

SIGNAL GENERATOR SG-1174/U

(NSN 6625-01075-8479)



**ORGANIZATIONAL, DIRECT SUPPORT AND  
 GENERAL SUPPORT MAINTENANCE  
 REPAIR PARTS AND SPECIAL TOOLS LIST  
 (INCLUDING DEPOT MAINTENANCE REPAIR PARTS AND  
 SPECIAL TOOLS)  
 FOR  
 SIGNAL GENERATOR SG-1174/U  
 (NSN 6625-01-075-8479)**

Current as of 25 January 1982

**REPORTING ERRORS AND RECOMMENDING IMPROVEMENTS**

You can improve this manual. If you find any mistakes or if you know of a way to improve the procedures, please let us know. Mail your letter, DA Form 2028 (Recommended Changes to Publications and Blank Forms), or DA Form 2028-2 located in the back of this manual direct to Commander, US Army Communications-Electronics Command, ATTN: DRSEL-ME-MQ, Fort Monmouth, NJ 07703.

In either case, a reply will be furnished direct to you.

**Table of Contents**

SECTION		Page	Illus Figure
	I. Introduction . . . . .	1	
	II. Repair Parts List . . . . .	5	
	00 Generator, Signal, SG-1174/U . . . . .	5	1
	Generator, Signal, SG-1174/U, Major Components . . . . .	7	2
	01 Dust Cover Assembly (A9) . . . . .	9	3
	02 Main Frame . . . . .	15	4
	0201 Cable Assembly . . . . .	19	5
	03 1,000 Volt Power Supply Assembly . . . . .	23	6
	04 Keyer Power Supply Assembly A2 . . . . .	27	7
	05 1,600 Volt Power Supply Assembly A . . . . .	31	8
	06 Low Voltage Power Supply Assembly A . . . . .	35	9
	07 Modulator Circuit Board Assembly A6 . . . . .	39	10
	08 Keyer and Tracker Assembly A7 . . . . .	45	11
	09 RF Tuning Unit Assembly All . . . . .	49	12
	10 Front Panel Assembly A12 . . . . .	51	13
SECTION	III. Special Tools List (Not applicable)		
	IV. National Stock Number and Part Number Index . . . . .	52	



# SECTION I

## INTRODUCTION

---

### 1. Scope

This manual lists spares and repair parts; special tools; special test, measurement, and diagnostic equipment (TMDE), and other special support equipment required for performance of organizational, direct support, and general support maintenance of the SG-1174/U. It authorizes the requisitioning and issue of spares and repair parts as indicated by the source and maintenance codes.

### 2. General

This Repair Parts and Special Tools List is divided into the following sections:

*a. Section II. Repair Parts List.* A list of spares and repair parts authorized for use in the performance of maintenance. The list also includes parts which must be removed for replacement of the authorized parts. Parts lists are composed of functional groups in numeric sequence, with the parts in each group listed in figure and item number sequence.

*b. Section III. Special Tools List.* Not applicable.

*c. Section IV. National Stock Number and Part Number Index.* A list, in National item identification number (NIIN) sequence, of all National stock numbers (NSN) appearing in the listings, followed by a list, in alphameric sequence, of all part numbers appearing in the listings. National stock numbers and part numbers are cross-referenced to each illustration figure and item number appearance.

### 3. Explanation of Columns

*a. Illustration.* This column is divided as follows:

(1) *Figure number.* Indicates the figure number of the illustration on which the item is shown.

(2) *Item number.* The number used to identify item called out in the illustration.

*b. Source, Maintenance, and Recoverability (SMR) Codes.*

(1) *Source code.* Source codes indicate the manner of acquiring support items for maintenance, repair, or overhaul of end items. Source codes are entered in the first and second positions of the Uniform SRM Code format as follows:

<i>Code</i>	<i>Definition</i>
-------------	-------------------

PA - Item procured and stocked for anticipated or known usage.

<i>Code</i>	<i>Definition</i>
-------------	-------------------

PD - Support item, excluding support equipment, procured for initial issue or outfitting and stocked only for subsequent or additional initial issues or outfittings. Not subject to automatic replenishment.

AH - Item to be assembled at general support maintenance level.

XA - Item is not procured or stocked because the requirements for the item will result in the replacement of the next higher assembly.

XD - A support item that is not stocked. When required, item will be procured through normal supply channels.

#### NOTE

Cannibalization or salvage may be used as a source of supply for any items source coded above except those coded XA and aircraft support items as restricted by AR 700-42.

(2) *Maintenance code.* Maintenance codes are assigned to indicate the levels of maintenance authorized to USE and REPAIR support items. The maintenance codes are entered in the third and fourth positions of the Uniform SMR Code format as follows:

(a) The maintenance code entered in the third position will indicate the lowest maintenance level authorized to remove, replace, and use the support item. The maintenance code entered in the third position will indicate one of the following levels of maintenance:

<i>Code</i>	<i>Application/Explanation</i>
-------------	--------------------------------

O - Support item is removed, replaced, used at the organizational level.

H - Support item is removed, replaced, used at the general support level.

(b) The maintenance code entered in the fourth position indicates whether the item is to be repaired and identifies the lowest maintenance level with the capability to perform complete repair (i.e., all authorized maintenance functions). This position will contain one of the following maintenance codes:

<i>Code</i>	<i>Application/Explanation</i>
-------------	--------------------------------

H - The lowest maintenance level capable of complete repair of the support item is the general support level.

Code Application/Explanation

Z - Nonreparable. No repair is authorized.

(3) *Recoverability code.* Recoverability codes are assigned to support items to indicate the disposition action on unserviceable items. The recoverability code is entered in the fifth position of the Uniform SMR Code format as follows:

Recoverability

Code

Definition

Z - Nonreparable item. When unserviceable, condemn and dispose at the level indicated in position 3.

H - Repairable item. When uneconomically repairable, condemn and dispose at the general support level.

c. *National Stock Number.* Indicates the National stock number assigned to the item and will be used for requisitioning purposes.

d. *Federal Supply Code for Manufacturer (FSCM).* The FSCM is a 5-digit numeric code listed in SB 708-41/42 which is used to identify the manufacturer, distributor, or Government agency, etc.

e. *Part Number.* Indicates the primary number used by the manufacturer (individual, company, firm, corporation, or Government activity), which controls the design and characteristics of the item by means of its engineering drawings specifications, standards, and inspection requirements to identify an item or range of items.

#### NOTE

When a stock numbered item is requisitioned, the repair part received may have a different part number than the part being replaced.

f. *Description.* Indicates the Federal item name and, if required, a minimum description to identify the item.

g. *Unit of Measure (U/M).* Indicates the standard of the basic quantity of the listed item as used in performing the actual maintenance function. This measure is expressed by a two-character alphabetical abbreviation (e.g., ea, in, pr, etc). When the unit of measure differs from the unit of issue, the lowest unit of issue that will satisfy the required units of measure will be requisitioned.

h. *Quantity Incorporated in Unit.* Indicates the quantity of the item used in the breakout shown on the illustration figure, which is prepared for a

functional group, subfunctional group, or an assembly.

#### 4. Special Information

a. The following publication pertains to the SG-1174/U and its components:

TM 11-6625-2952-14, Signal Generator, SG-1174/U.

b. National stock numbers (NSN's) that are missing from P source coded items have been applied for and will be added to this TM by future change/revision when they are entered in the Army Master Data File (AMDF). Until the NSN's are established and published, submit exception requisitions to Commander, US Army Communications-Electronics Command, ATTN: DR-SEL-MM, Fort Monmouth, NJ 07703 for the part required to support your equipment.

#### 5. How to Locate Repair Parts

a. When National stock number or part number is unknown.

(1) *First.* Using the table of contents, determine the functional group within which the item belongs. This is necessary since illustrations are prepared for functional groups and listings are divided into the same groups.

(2) *Second.* Find the illustration covering the functional group to which the item belongs.

(3) *Third.* Identify the item on the illustration and note the illustration figure and item number of the item.

(4) *Fourth.* Using the Repair Parts Listing, find the figure and item number noted on the illustration.

b. When National stock number or part number is known.

(1) *First.* Using the Index of National Stock Numbers and Part Numbers, find the pertinent National stock number or part number. This index is in NIIN sequence followed by a list of part numbers in alphameric sequence, cross-referenced to the illustration figure number and item number.

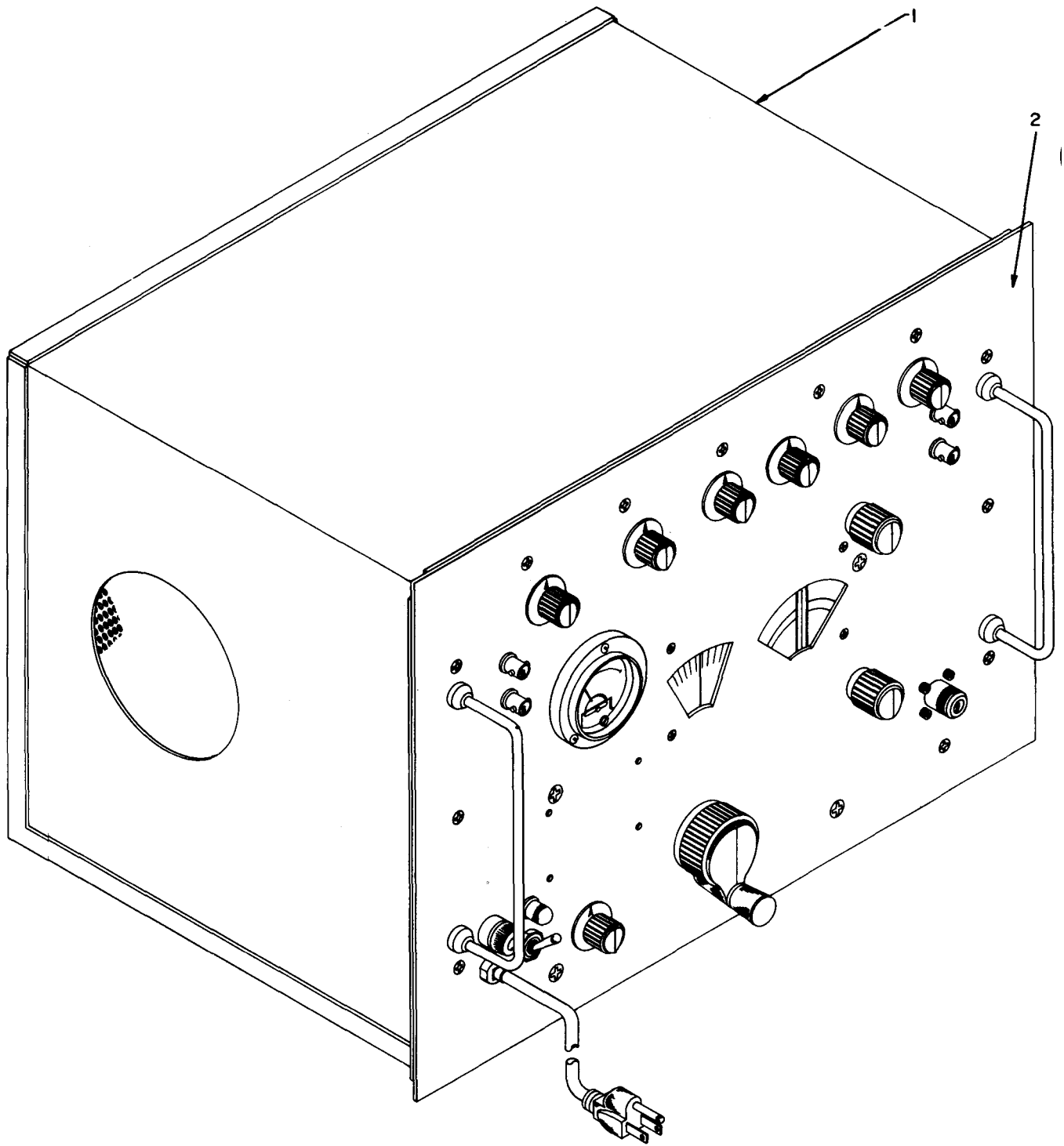
(2) *Second.* After finding the figure and item number, locate the figure and item number in the repair parts list.

#### 6. Abbreviations

Not applicable.

(Next printed page is 4)





EL5YC021

Figure 1. Generator, Signal SG-1174/U.



SECTION II

(1)	(2)	(3)	(4)	(5)	(6)	(7)	(8)
ILLUSTRATION					DESCRIPTION		QTY
(A)	(B)	NATIONAL		PART			INC
FIG	ITEM	STOCK	FSCM	NUMBER		USABLE ON CODE	IN
NO	NO	NUMBER		NUMBER			UNIT
GROUP 00 GENERATOR, SIGNAL SG-117470							
1	1	PAHZZ	25778	100440	DUST COVER ASSY		EA 1
1	2	XAHHH	25778	100453	FRONT PANEL ASSY		EA 1

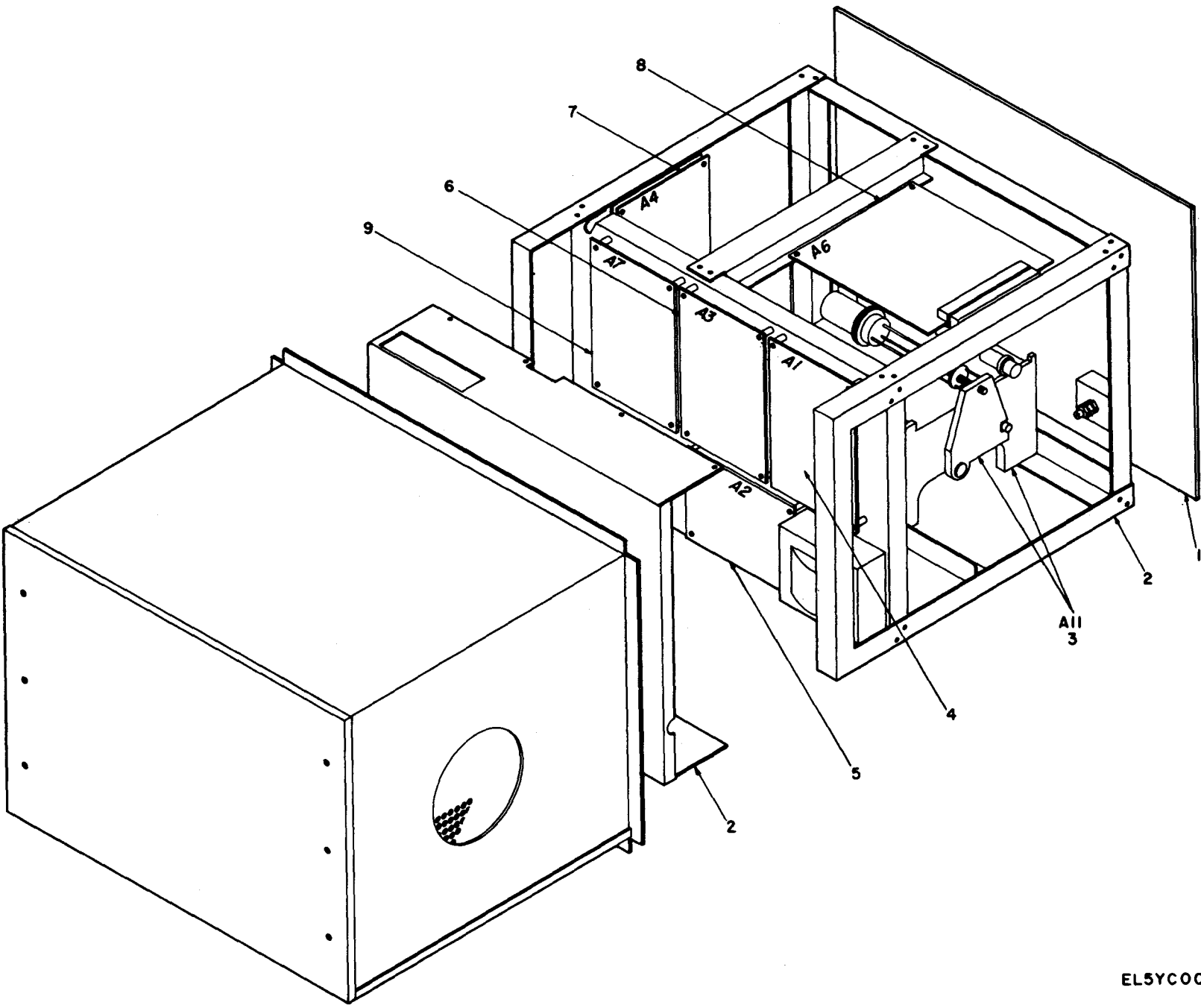
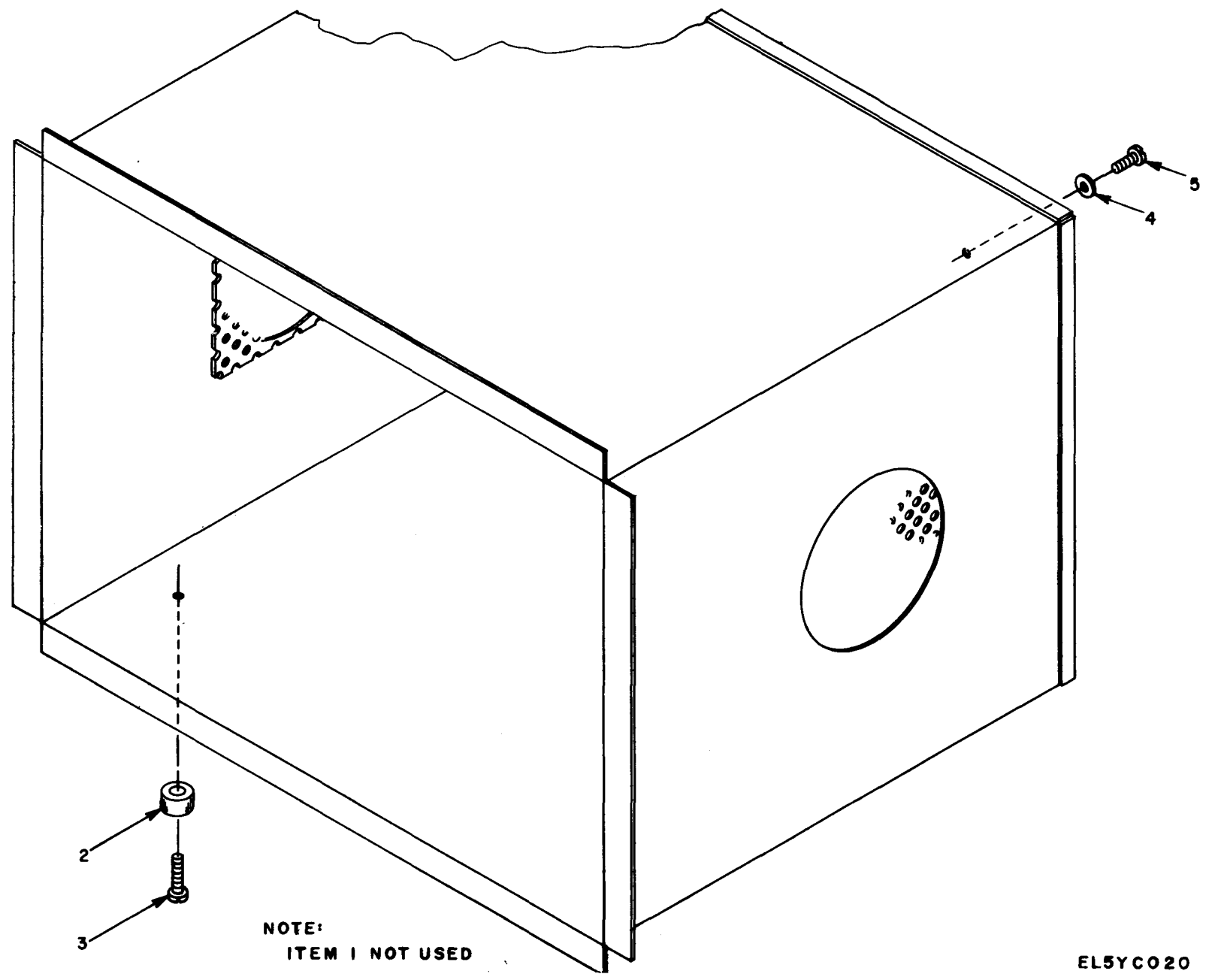


Figure 2. Generator, Signal SG-1174/U, Major Components.

SECTION II

(1) ILLUSTRATION (A) FIG NO	(2) (B) ITEM NO	(3) SMR CODE	(4) NATIONAL STOCK NUMBER	(5) FSCM	(6) PART NUMBER	(7) DESCRIPTION  USABLE ON CODE	(8) QTY INC IN UNIT
2	1	XAHZZ		25778	203273	FRONT PANEL MARKED	EA 1
2	2	XAHHH		25718	100439	MAIN FRAME ASSY	EA 1
2	3	XAHHH		25778	100325	R F TUNING UNIT ASY	EA 1
2	4	PAHHH	6625-01-006-6344	25778	100432	POWER SUPPLY SUBASS	EA 1
2	5	PAHHH	5950-01-095-3168	25778	100423	POWER SUPPLY	EA 1
2	6	PAHHH	6625-01-006-6345	25778	100433	POWER SUPPLY SUBASS	EA 1
2	7	PAHHH	6625-01-006-6343	25778	100434	POWER SUPPLY SUBASS	EA 1
2	8	PAHHH	6625-01-095-3245	25778	101548	CIRCUIT CARD ASSEMB	EA 1
2	9	PAHHH	6625-01-077-4527	25778	101797	KEYER AND TRACKER A	EA 1



NOTE:  
ITEM 1 NOT USED

EL5YC020

Figure 3. Dust Cover Assembly (A9).

SECTION II

(1) ILLUSTRATION (A) FIG NO	(2) (B) ITEM NO	(3) SMR CODE	(4) NATIONAL STOCK NUMBER	(5) FSCM	(6) PART NUMBER	(6) DESCRIPTION	USABLE ON CODE	(7) U/M	(8) QTY INC IN UNIT
GROUP 01 DUST COVER ASSEMBLY (A9)									
3	2	PAHZZ	5340-00-266-0763	70485	251	FOOT RUBBER		EA	4
3	3	PAHZZ	5305-01-098-3657	25778	363662	SCREW		EA	4
3	4	PAHZZ	5310-00-809-8546	96906	MS27183-8	WASHER, FLAT		EA	6
3	5	PAHZZ	5305-01-098-3656	25778	3633663	SCREW		EA	1



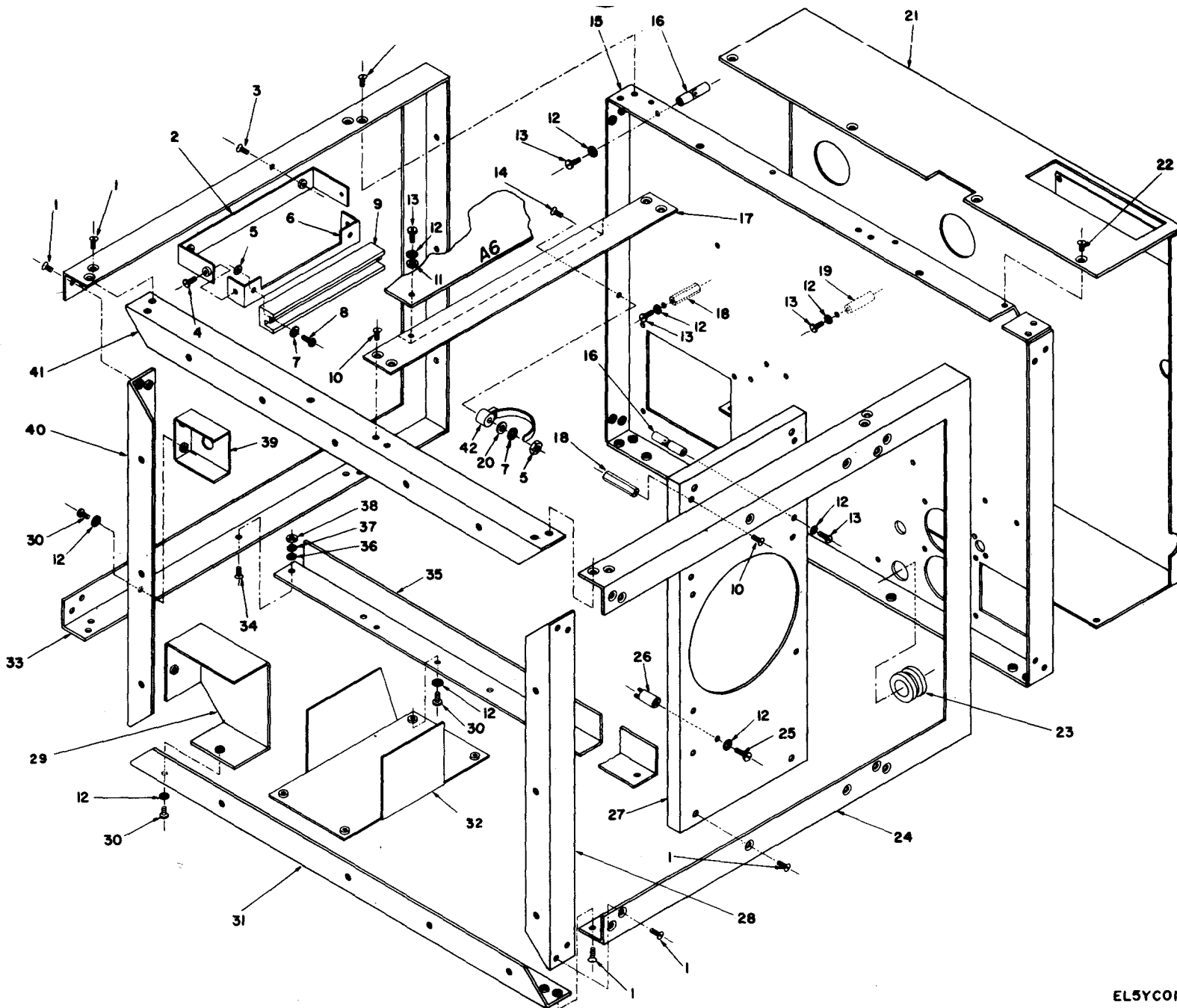
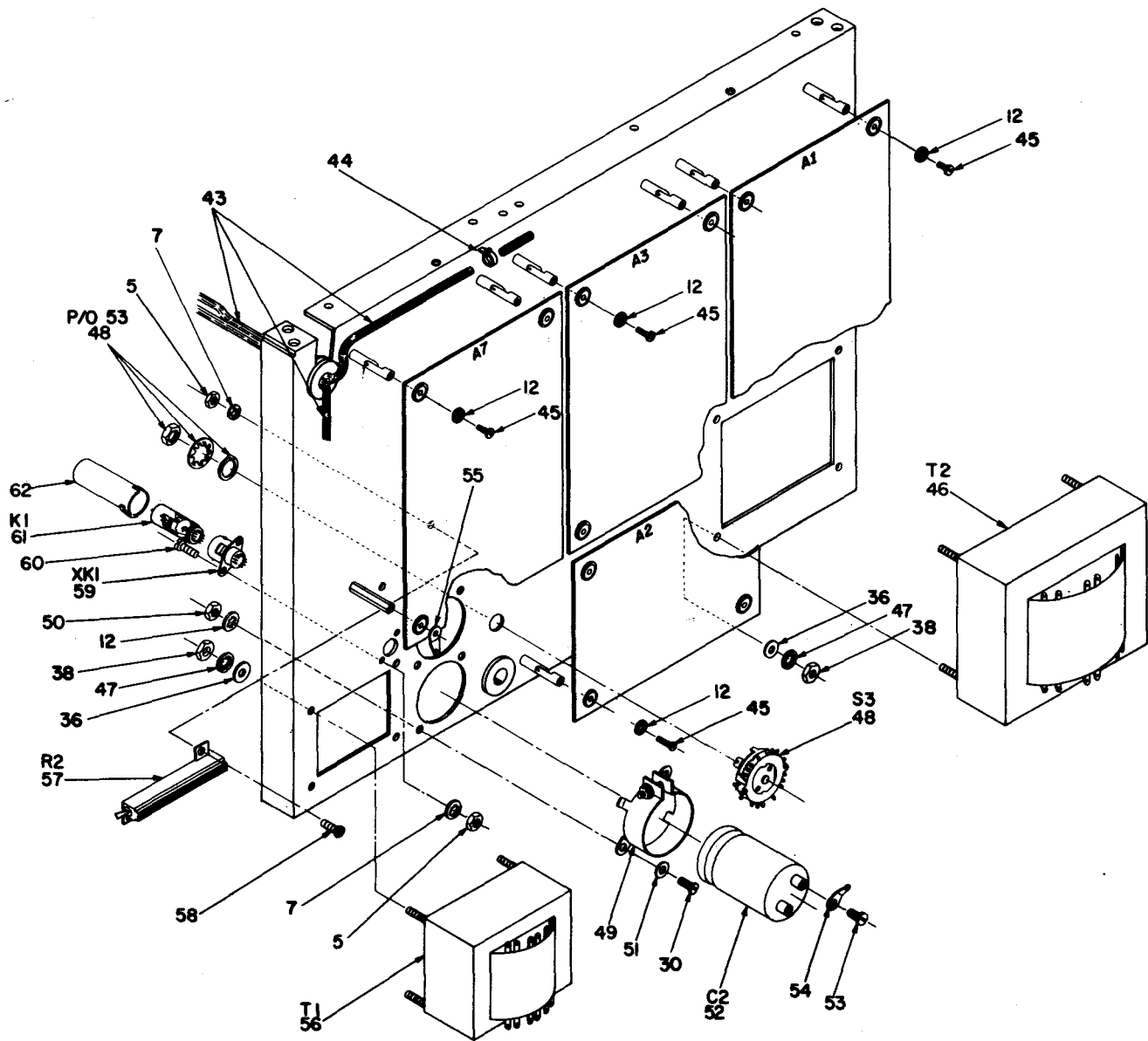


Figure 4. Main Frame (Sheet 1 of 4).

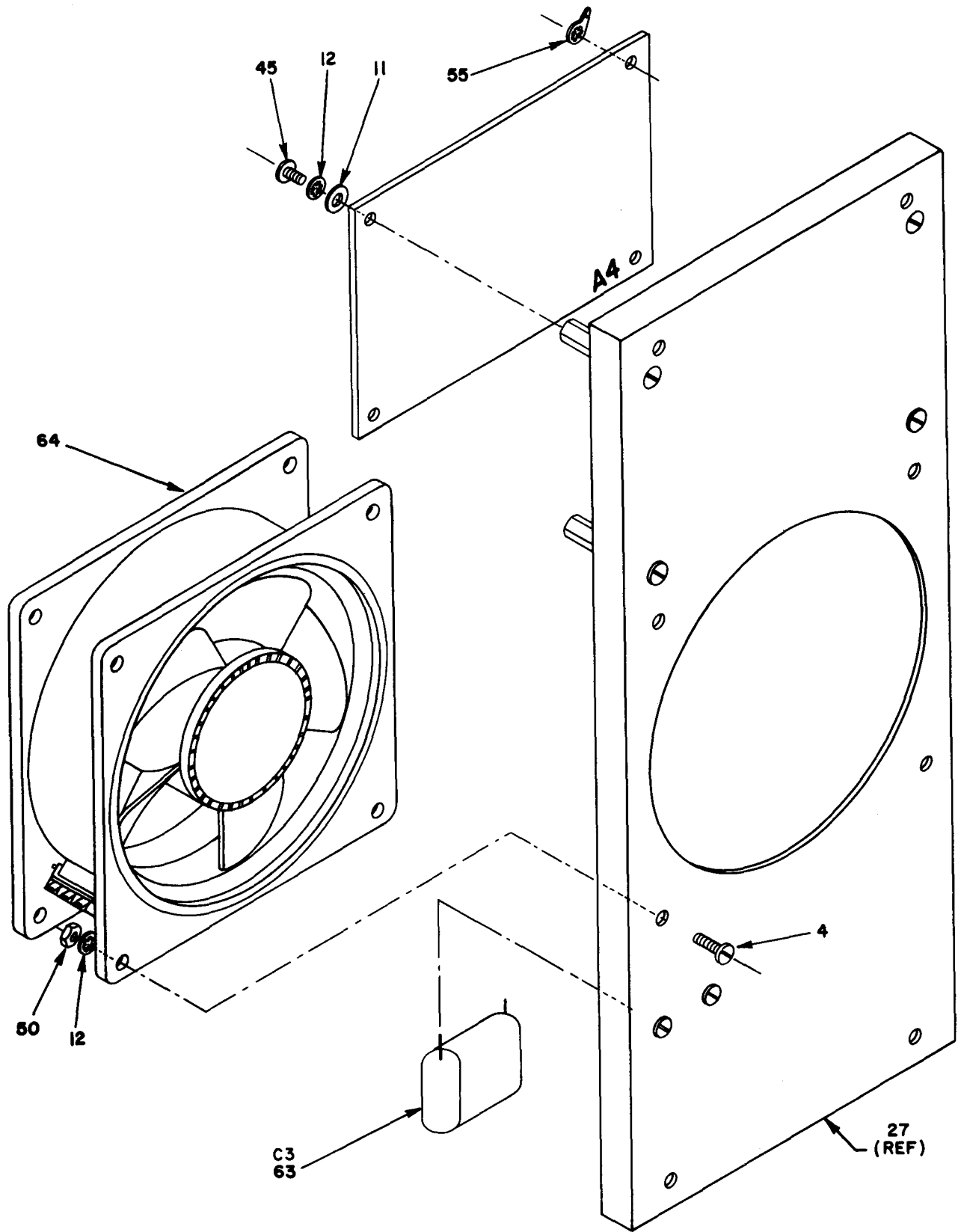
EL5YC014



EL5YC015

Figure 4. Main Frame (Sheet 2 of 4).





EL5YC016

Figure 4. Main Frame (Sheet 3 of 4).

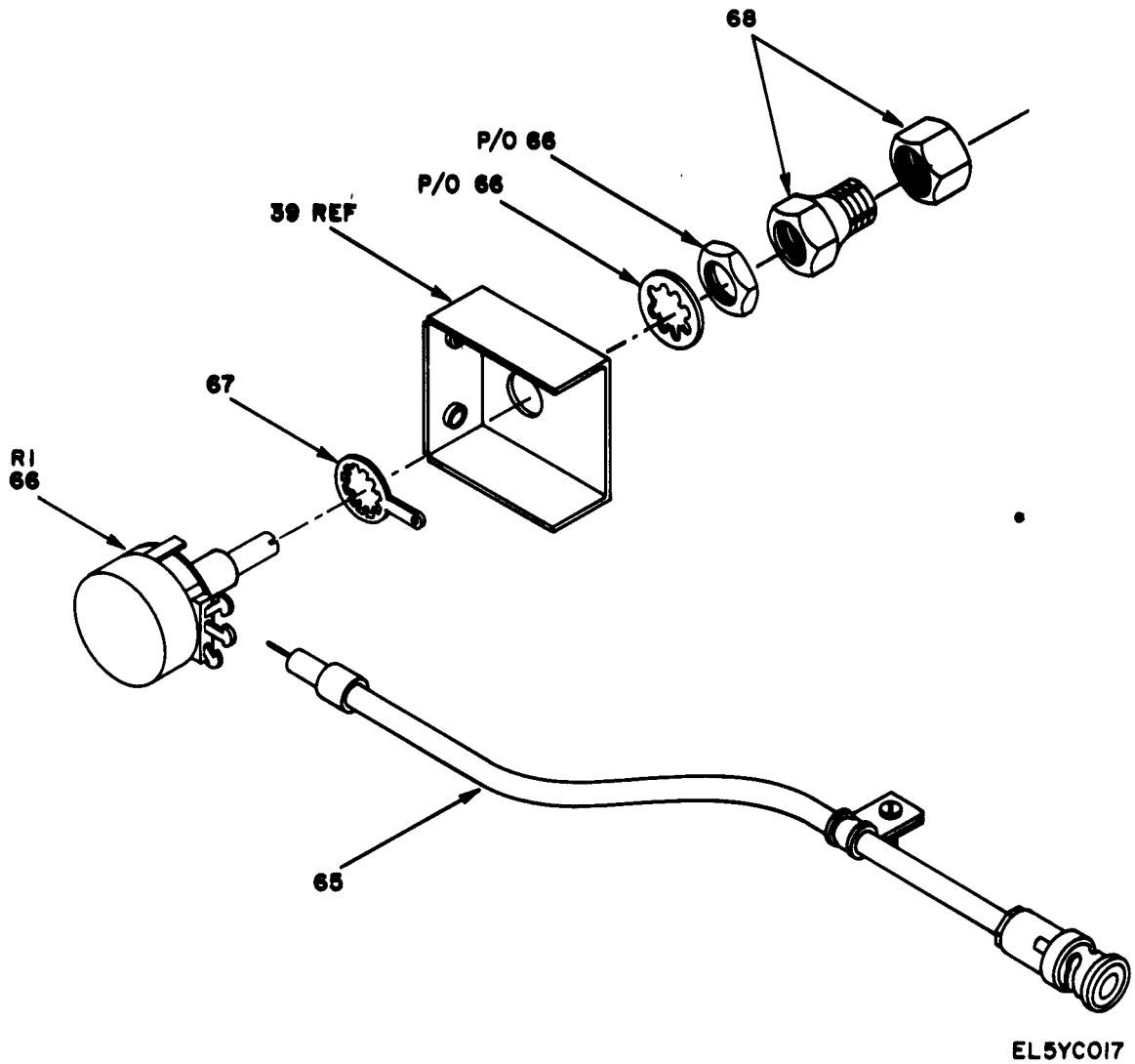
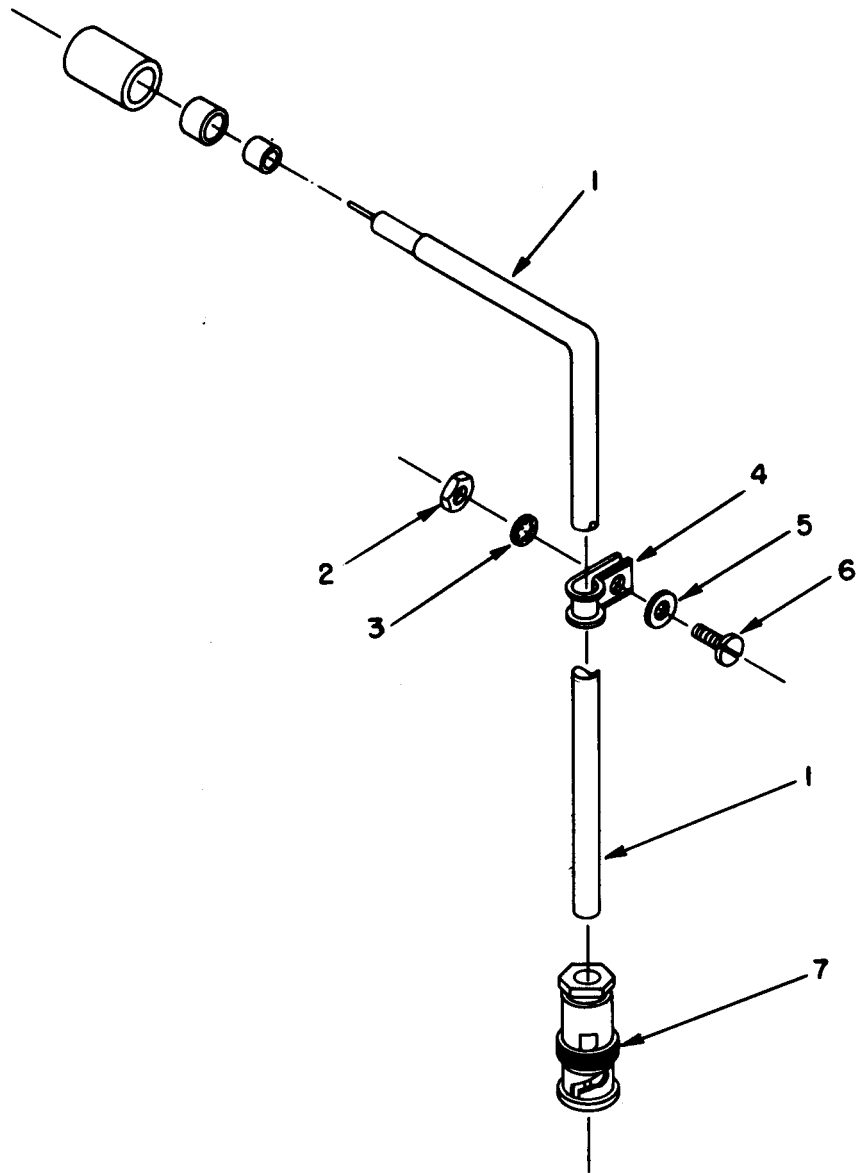


Figure 4. Main Frame (Sheet 4 of 4).

SECTION II		(2)	(3)	(4)	(5)	(6)	(7)	(8)
(1)	ILLUSTRATION					DESCRIPTION		QTY
(A)	(B)		NATIONAL		PART			INC
FIG	ITEM	SMR	STOCK	FSCM	NUMBER		USABLE ON CODE	IN
NO	NO	CODE	NUMBER					UNIT
							U/M	
						GROUP 02 MAIN FRAME		
4	1	PAHZZ	5305-00-059-4568	96906	MS35190-253	SCREW,MACHINE	EA	4
4	2	XAHZZ		25778	203077	BKT,CONNECTOR, OUTER	EA	1
4	3	PAHZZ	5305-00-576-2273	96906	MS35239-35	SCREW,MACHINE	EA	2
4	4	PAHZZ	5305-00-889-3000	96906	MS35206-230	SCREW MACHINE	EA	2
4	5	PAHZZ	5310-00-934-9739	96906	MS35649-242	NUT,PLAIN,HEXAGON	EA	2
4	6	XAHZZ		25778	203078	CONNECTOR BKT INNER	EA	1
4	7	PAHZZ	5310-00-193-7577	96906	MS35333-36	WASHER, LOCK	EA	2
4	8	PAHZZ	5305-00-054-5651	96906	MS51957-17	SCREW,MACHINE	EA	2
4	9	PAHZZ		31781	007024041263001	CONNECTOR	EA	1
4	10	PAHZZ	5305-00-059-4550	96906	MS35190-235	SCREW,MACHINE	EA	2
4	11	PAHZZ	5310-00-622-9531	96906	NAS620-6	WASHER,FLAT	EA	4
4	12	PAHZZ	5310-00-579-0079	96906	MS35333-37	WASHER, LOCK	EA	2
4	13	PAHZZ	5305-00-984-4984	96906	MS35206-227	SCREW,MACHINE	EA	2
4	14	PAHZZ	5305-00-957-6264	96906	MS35190-225	SCREW,MACHINE	EA	1
4	15	XAHZZ		25778	202697	CHASSIS REAR	EA	1
4	16	XAHZZ		25778	202697-1	HINGE	EA	10
4	17	XAHZZ		25778	203079	SUPPORT TOP	EA	1
4	18	PAHZZ	5310-00-050-9105	83330	2322	STANDOFF	EA	2
4	19	XAHZZ		25778	203316	STANDOFF	EA	3
4	20	PAHZZ	5310-00-950-1310	96906	MS27183-4	WASHER,FLAT	EA	7
4	21	XAHZZ		25778	203200	REAR COVER	EA	1
4	22	PAHZZ	5305-00-958-5453	96906	MS35190-236	SCREW,MACHINE	EA	8
4	23	PAHZZ	5325-00-050-2862	76385	Z2210	GROMMET	EA	2
4	24	XAHZZ		25778	202699	FRAME RIGHT SIDE	EA	1
4	25	PAHZZ	5305-00-984-4983	96906	MS24584-23	SCREW,MACHINE	EA	2
4	26	PAHZZ	5940-00-822-7268	18915	PR211-7	TERMINAL,STUD	EA	2
4	27	XAHZZ		25778	200972	BLOWER CHASSIS	EA	1
4	28	XAHZZ		25778	200962	SUPPORT FRONT RIGHT	EA	1
4	29	XAHZZ		25778	203147	GUARD LINE SWITCH	EA	1
4	30	PAHZZ	5305-00-984-4988	96906	MS35206-228	SCREW,MACHINE	EA	2
4	31	XAHZZ		25778	200960	SUPPORT FRONT BOTTM	EA	1
4	32	XAHZZ		25778	203146	GUARD TUNING HEAD	EA	1
4	33	XAHZZ		25778	202698	FRAME LEFT SIDE	EA	1
4	34	PAHZZ		96906	MS35289-53	SCREW,MACHINE	EA	2
4	35	XAHZZ		25718	200963	BOTTOM CROSSSUPPORT	EA	1
4	36	PAHZZ	5310-00-167-0823	88044	AN960-816	WASHER,FLAT	EA	2
4	37	PAHZZ	5310-00-045-3299	96906	MS35338-42	WASHER, LOCK	EA	2
4	38	PAHZZ	5310-00-934-9757	96906	MS35649-282	NUT,PLAIN,HEXAGON	EA	2
4	39	XAHZZ		25778	200849	BRACKET POT	EA	1

SECTION II								
(1)	(2)	(3)	(4)	(5)	(6)	(7)	(8)	
ILLUSTRATION					DESCRIPTION		QTY	
(A)	(B)	NATIONAL		PART			INC	
FIG	ITEM	STOCK		NUMBER			IN	
NO	NO	NUMBER	FSCM		USABLE ON CODE	U/M	UNIT	
4	40	XAHZZ		200961	SUPPORT FRONT LEFT	EA	1	
4	41	XAHZZ		200959	SUPPORT FRONT TOP	EA	6001	
4	42	PAHZZ		TY-533M	TY-WRAP	EA	7	
4	43	XAHZZ		100514	HARNES MAIN	EA	1	
4	43	XAHZZ		100514	HARNES MAIN	EA	1	
4	44	PAHZZ	5975-00-727-5153	TY523M	STRAP, TIEDOWN, ELECT	EA	10	
4	45	PAHZZ	5305-00-889-3001	MS35206-231	SCREW, MACHINE	EA	4	
4	46	PAHZZ	5950-01-020-9704	351050	TRANSFORMER, POWER	EA	1	
4	47	PAHZZ	5310-00-559-0070	MS35333-38	WASHER, LOCK	EA	8	
4	48	PAHZZ	5930-01-038-2630	359080	SWITCH, ROTARY	EA	1	
4	49	PAHZZ	5910-00-682-2543	VR3	RETAINER, CAPACITOR	EA	2	
4	50	PAHZZ	5310-00-680-6627	MS25082-1	NUT, PLAIN, HEXAGON	EA	4	
4	51	PAHZZ	5310-00-167-0832	AN960-6L	WASHER, FLAT	EA	4	
4	52	PAHZZ	5910-00-008-7057	91C50HC392	CAPACITOR, FIXED, ELE	EA	2	
4	53	PAHZZ	5305-00-990-6444	MS35207-261	SCREW, MACHINE	EA	4	
4	54	PAHZZ	5940-00-159-1290	83330 1414-10	TERMINAL, LUG	EA	4	
4	55	PAHZZ	5940-00-827-2653	MS77068-2	LUG, TERMINAL	EA	2	
4	56	PAHZZ	5950-01-096-1824	28778 354049	TRANSFORMER, POWER	EZ	1	
4	57	PAHZZ		RE75G4R34	RESISTER, FIXED, WIRE	EA	1	
4	58	PAHZZ	5305-00-889-2998	MS35206-216	SCREW, MACHINE	EA	2	
4	59	PAHZZ	5935-00-222-9828	M12883-03-01	SOCKET, PLUG-IN ELEC	EA	1	
4	60	PAHZZ	5305-00-558-4889	MS35223-14	SCREW, MACHINE	EA	2	
4	61	PAHZZ	5945-00-642-5318	115N060T	RELAY, THERMAL	EA	1	
4	62	PAHZZ	5960-00-284-4352	TS103U03	SHIELD, ELECTRON TUB	EA	1	
4	63	PAHZZ		6DP5-224	CAPACITOR	EA	1	
4	64	PAHZZ		ST778-1F	BLOWER	EA	1	
4	65	AHHHH		100516	CABLE ASSY BNC	EA	1	
4	66	PAHZZ	5905-00-552-2859	RV4NAYS501A	RESISTOR, VARIABLE, N	EA	1	
4	67	PAHZZ		2124-20-00	ROD, GROUND	EA	1	
4	68	XAHZZ		1701	POT LUCK	EA	1	



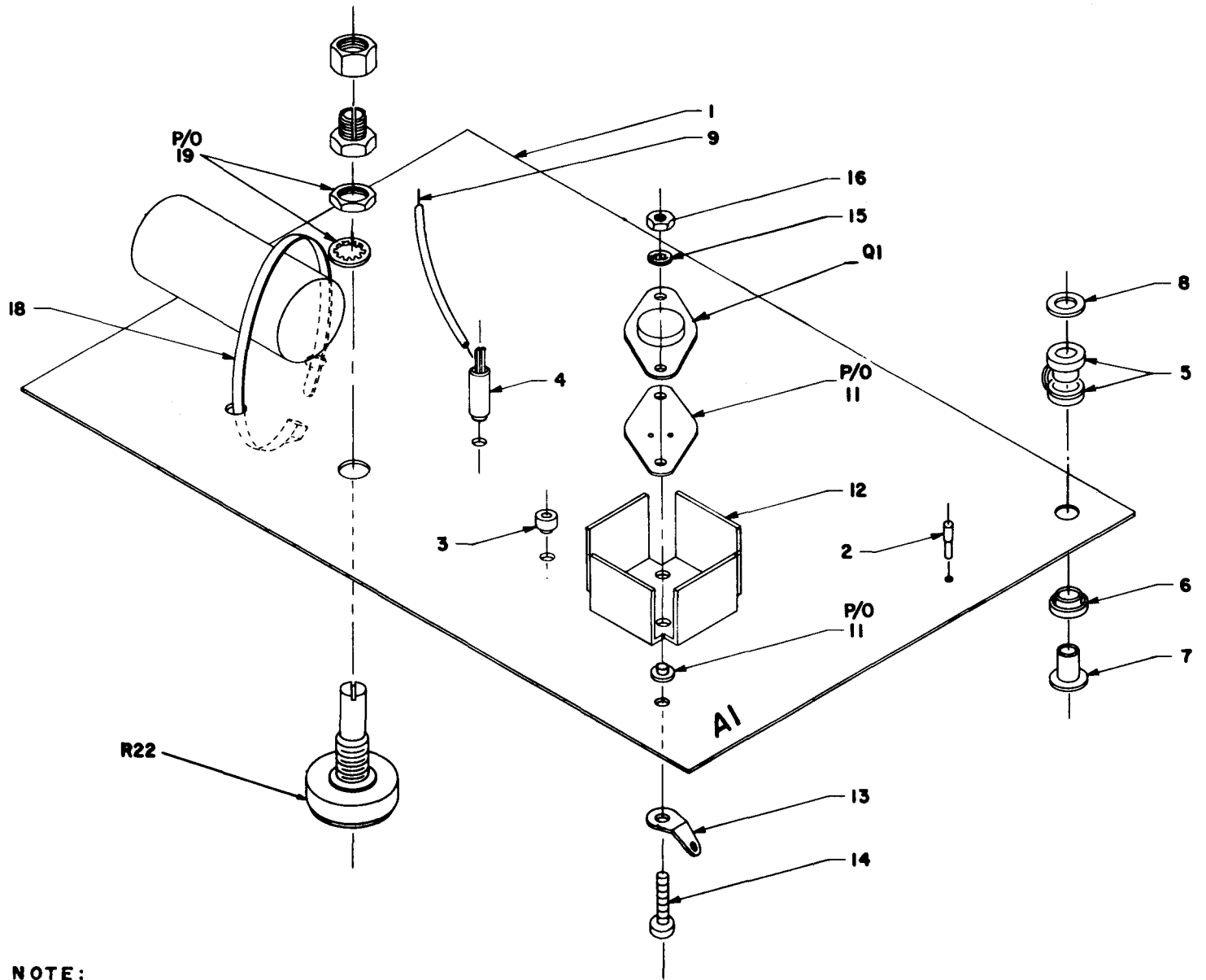


EL5YCO18

Figure 5. Cable Assembly.

SECTION II

(1) ILLUSTRATION (A) FIG NO	(2) (B) ITEM NO	(3) SMR CODE	(4) NATIONAL STOCK NUMBER	(5) FSCM	(6) PART NUMBER	(7) DESCRIPTION  USABLE ON CODE	(8) QTY INC IN UNIT
GROUP 0201 CABLE ASSEMBLY							
5	1	PAHZZ	6145-00-661-0191	81349	M17/29-RG59	CABLE,RADIO FREQUEN	EA 1
5	2	PAHZZ	5310-00-680-6627	96906	MS25082-1	NUT,PLAIN,HEXAGON	EA 1
5	3	PAHZZ		96906	MS35333	WASHER	EA 1
5	4	PAHZZ	5340-00-827-6389	83330	773	CLAMP,LOOP	EA 1
5	5	PAHZZ	5310-00-167-0832	96906	AN960-6L	WASHER,FLAT	EA 1
5	6	PAHZZ	5305-00-984-4989	96906	MS35206-229	SCREW,MACHINE	EA 1
5	7	PAHZZ		81349	UG260DU	CONNECTOR	EA 1

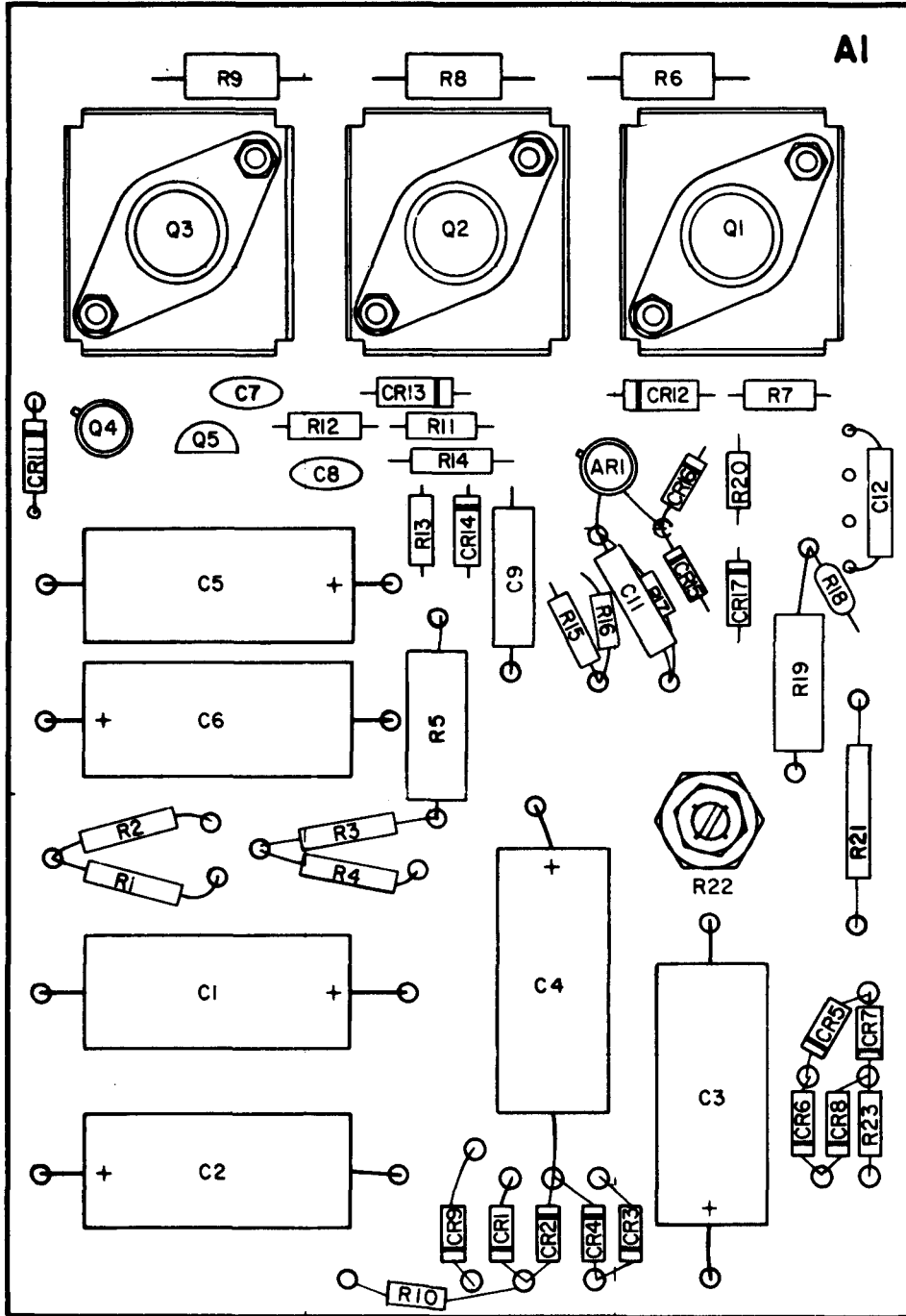


**NOTE:**  
ITEMS 10 AND 20  
NOT USED

Figure 6. 1,000 Volt Power Supply (A1) (Sheet 1 of 3).

EL5YC003





EL5YC002

Figure 6. 1,000 Volt Power Supply (A1) (Sheet 2 of 3).

Ref Des.	Item	Ref Des.	Item	Ref Des.	Item
AR1	28	CR7	29	R4	33
C1	17	CR8	29	R5	34
C2	17	CR9	29	R6	35
C3	17	CR11	29	R7	36
C4	17	CR12	29	R8	35
		CR13	30	R9	35
C5	23	CR14	30	R10	45
C6	23	CR15	31	R11	36
C7	24	CR16	31	R12	36
C8	25	CR17	32	R13	37
C9	26			R14	38
C11	27	Q1	11	R15	39
C12	27	Q2	11	R16	40
		Q3	11	R17	41
CR1	29	Q4	21	R18	42
CR2	29	Q5	22	R19	43
CR3	29			R20	44
CR4	29	R1	33	R21	43
CR5	29	R2	33	R22	19
CR6	29	R3	33	R23	45

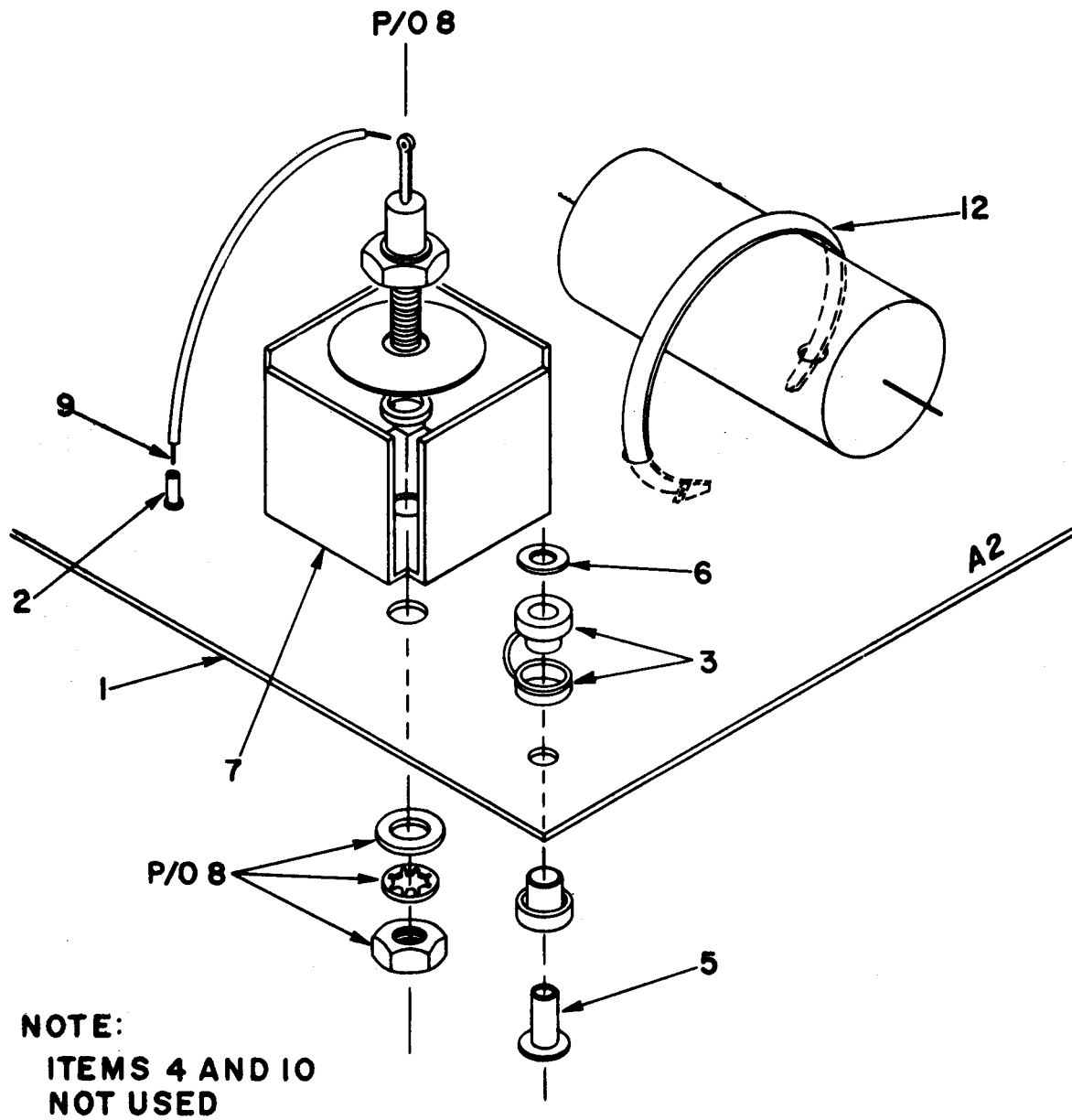
EL5YC023

Figure 6. 1,000 Volt Power Supply Assembly (A1) (Sheet 3 of 3).

SECTION II		(2)	(3)	(4)	(5)	(6)	(7)	(8)	
(1)	ILLUSTRATION					DESCRIPTION		QTY	
FIG	(A)	SMR	NATIONAL	FSCM	PART		USABLE ON CODE	INC	
NO	ITEM	CODE	STOCK		NUMBER			IN	
	NO		NUMBER					UNIT	
GROUP 03 1000 VOLT POWER SUPPLY (A1)									
6	1	XAHZZ		25778	200840	P C BOARD		EA	1
6	2	PAHZZ		91833	1238	TERMINAL, FEEDTHRU		EA	10
6	3	XAHZZ		98291	011-6809-00-0209	INSULATION TEFLON		EA	7
6	4	XAHZZ		83330	93-2001	STANDOFF TEFLON		EA	34
6	5	XAHZZ		31827	6-4-1	GROMMET, NONMETALLIC		EA	4
6	6	XAHZZ		31827	5-3-1	GROMMET		EA	4
6	7	PAHZZ	5325-00-282-6633	57771	A355	EYELET, METALLIC		EA	4
6	8	PAHZZ	5310-00-765-3197	96906	MS27183-41	WASHER, FLAT		EA	4
6	9	PAHZZ	6145-00-160-4775	92194	298	WIRE, ELECTRICAL		EA	1
6	11	PAHZZ	5961-00-455-4441	02735	40318	TRANSISTOR		EA	3
6	12	XAHZZ		25778	200841	HEAT SINK		EA	3
6	13	PAHZZ	5940-00-827-2653	96906	MS77068-2	TERMINAL, LUG		EA	1
6	14	PAHZZ	5305-00-984-4989	96906	MS35206-229	SCREW, MACHINE		EA	2
6	15	PAHZZ	5310-00-579-0079	96906	MS35333-37	WASHER, LOCK		EA	2
6	16	PAHZZ	5310-00-934-9747	96906	MS35649-262	NUT, PLAIN, HEXAGON		EA	2
6	17	PAHZZ		12674	EMW2852-20-450	CAPACITOR, FIXED, ELE		EA	4
6	18	PAHZZ		53421	T50R	STRAP, TIEDOWN, ELET		EA	4
6	19	PAHZZ	5905-01-038-0657	80294	3852A-282-251A	RESISTOR, VARIABLE, N		EA	1
6	21	PAHZZ	5961-00-985-9073	80131	2N3053	TRANSISTOR		EA	1
6	22	PAHZZ	5961-00-892-8706	80131	2N3904	TRANSISTOR		EA	1
6	23	PAHZZ	5910-00-881-9379	00656	P8292Z30	CAPACITOR, FIXED, MET		EA	2
6	24	PAHZZ		81349	CM05ED511S	CAPACITOR		EA	1
6	25	PAHZZ	5910-00-643-9355	71590	DD502G	CAPACITOR, FIXED, CER		EA	1
6	26	PAHZZ		12673	32MPC1004J05	CAPACITOR, FIXED, MET		EA	1
6	27	PAHZZ	5910-01-007-1552	12673	32MPC4703K05	CAPACITOR		EA	2
6	28	PAHZZ	5962-00-232-3945	34148	SL20169	MICROCIRCUIT, LINEAR		EA	1
6	29	PAHZZ	5961-01-044-4173	04713	MR250-2	SEMICONDUCTOR DEVIC		EA	11
6	30	PAHZZ	5961-00-944-3832	80131	1N4383	SEMICONDUCTOR DE		EA	2
6	31	PAHZZ	5961-00-842-9864	81349	JAN1N914	SEMICONDUCTOR DEVIC		EA	2
6	32	PAHZZ	5961-00-866-5454	81349	JAN1N821	SEMICONDUCTOR DEVIC		EA	1
6	33	PAHZZ	5905-00-252-1047	81349	RCR32G274JS	RESISTOR, FIXED, COMP		EA	4
6	34	PAHZZ	5905-00-410-0298	81349	RC42GF152K	RESISTOR, FIXED, COMP		EA	1
6	35	PAHZZ	5905-00-279-2644	81349	RC32GF114J	RESISTOR, FIXED, COMP		EA	3
6	36	PAHZZ	5905-00-110-7620	81349	RCR07G102JS	RESISTOR, FIXED COMP		EA	3
6	37	PAHZZ	5905-00-111-8357	81349	RCR20G681JS	RESISTOR, FIXED, COMP		EA	1
6	38	PAHZZ	5905-00-114-5416	81349	RCR20G274JS	RESISTOR, FIXED, COMP		EA	1
6	39	PAHZZ	5905-00-104-5755	81349	RCR20G10R0JS	RESISTOR, FIXED, COMP		EA	1
6	40	PAHZZ	5905-00-816-8554	81349	RC07GF103K	RESISTOR, FIXED, COMP		EA	1
6	41	PAHZZ	5905-00-106-1282	81349	RCR20G223JS	RESISTOR, FIXED, COMP		EA	1

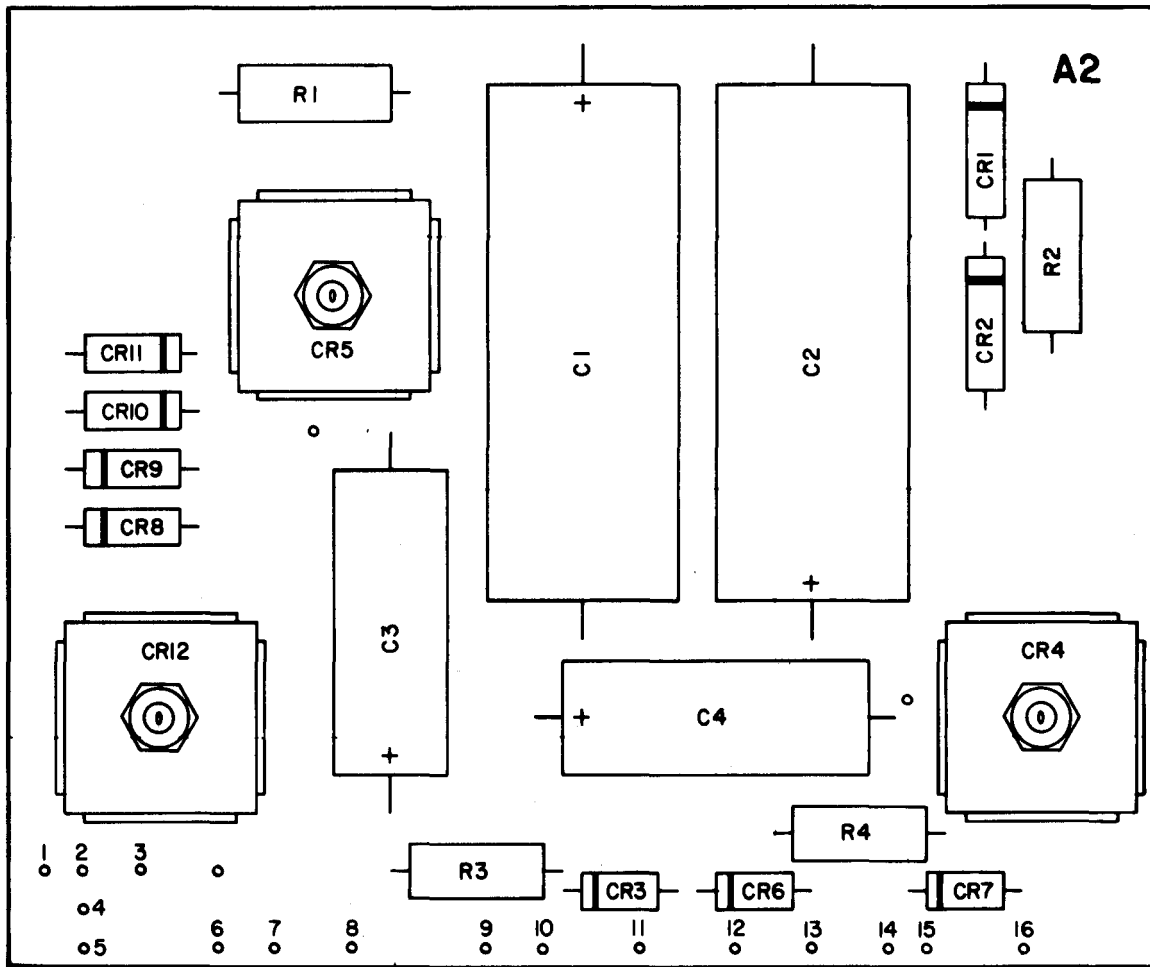
SECTION II

(1) ILLUSTRATION (A) FIG NO	(2) (B) ITEM NO	(3) SMR CODE	(4) NATIONAL STOCK NUMBER	(5) FSCM	(6) PART NUMBER	(7) DESCRIPTION  USABLE ON CODE	(8) QTY INC IN UNIT
6	42	PAHZZ	5905-00-810-5232	81349	RN60C1272F	RESISTOR, FIXED, FILM	EA 1
6	43	PAHZZ	5905-00-552-6242	81349	RN7589533F	RESISTOR, FIXED, FILM	EA 2
6	44	PAHZZ	5905-00-105-7764	81349	RCR07G222JS	RESISTOR, FIXED, COMP	EA 1
6	45	PAHZZ	5905-00-111-4858	81349	RCR20G471JS	RESISTOR, FIXED, COMP	EA 2



EL5YC005

Figure 7. Keyer Power Supply Assembly (A2) (Sheet 1 of 2).

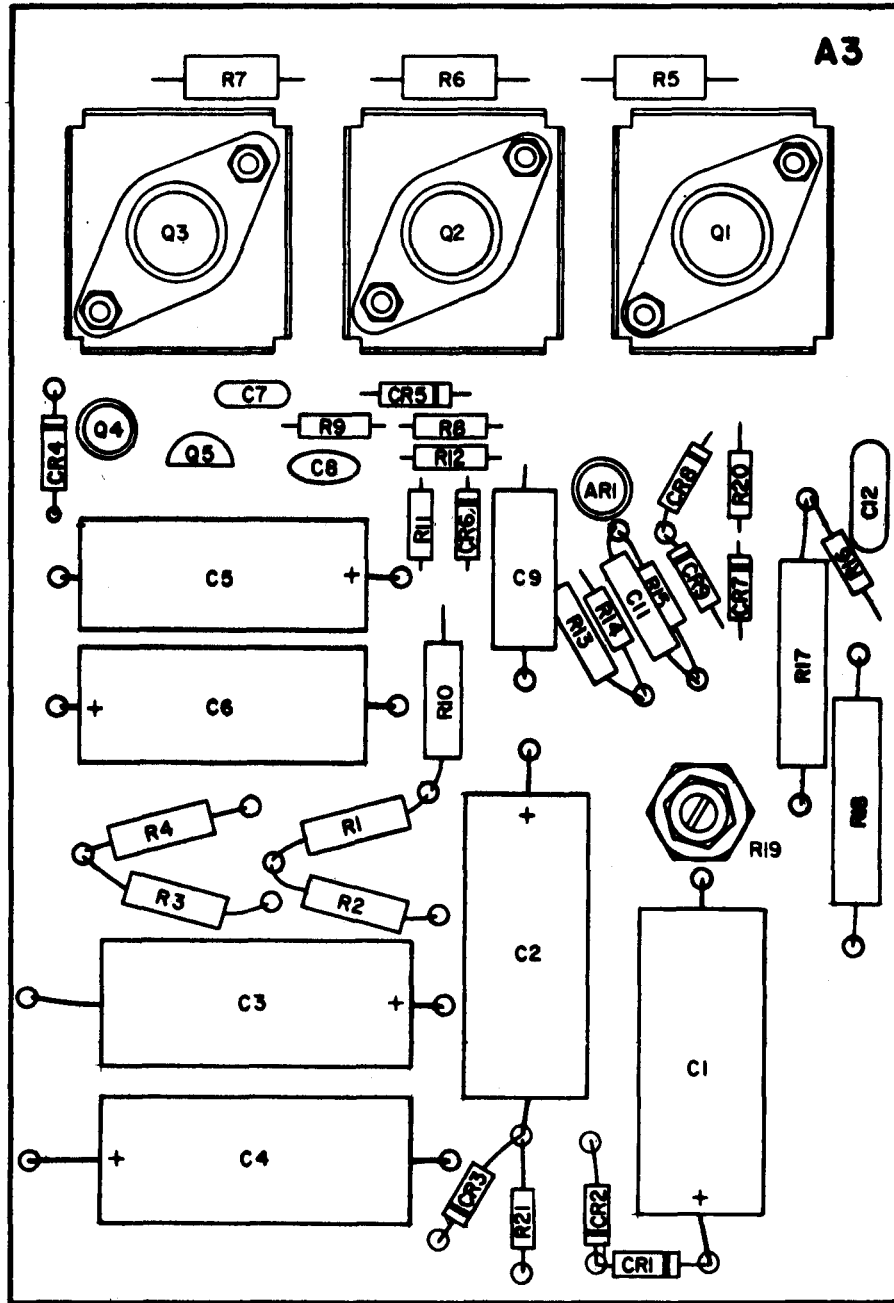


Ref Des.	Item	Ref Des.	Item	Ref Des.	Item
C1	11	CR3	15	CR10	16
C2	11	CR4	8	CR11	16
C3	13	CR5	8	CR12	17
C4	13	CR6	15		
CR1	14	CR7	15	R1	18
CR2	14	CR8	16	R2	18
		CR9	16	R3	19
				R4	19

EL5YC004

Figure 7. Keyer Power Supply Assembly (A2) (Sheet 2 of 2).

SECTION II		(2)	(3)	(4)	(5)	(6)	(7)	(8)
(1)	ILLUSTRATION					DESCRIPTION		QTY
FIG	(A) (B) ITEM	SMR	NATIONAL	FSCM	PART		USABLE ON CODE	INC
NO	NO	CODE	STOCK		NUMBER			IN
			NUMBER					UNIT
GROUP 04 KEYS POWER SUPPLY (A2)								
7	1	XAHZZ		25778	200491	P C BOARD		EA 1
7	2	PAHZZ		91833	1238	TERMINAL, FEEDTHRU		EA 31
7	3	XAHZZ		31827	6-4-1	GROMMET, NONMETALLIC		EA 4
7	5	PAHZZ	5325-00-282-6633	57771	A355	EYELET, METALLIC		EA 4
7	6	PAHZZ	5310-00-765-3197	96906	MS27183-41	WASHER, FLAT		EA 4
7	7	XAHZZ		25778	200848	HEATSINK		EA 3
7	8	PAHZZ	5961-00-400-6267	80131	1N3005A	SEMICONDUCTOR DEVIC		EA 2
7	9	PAHZZ	6145-00-160-4775	92194	298	WIRE, ELECTRICAL		FT 1
7	11	PAHZZ	5910-01-097-8623	24138	TAK100TT250	CAPACITOR, FIXED, ELE		EA 2
7	12	PAHZZ		53421	T50R	STRAP, TIEDOWN, ELECT		EA 2
7	13	PAHZZ	5910-01-026-5812	24138	TDA1000M16T	CAPACITOR, FIXED, ELE		EA 2
7	14	PAHZZ	5961-00-494-5023	04713	MR991	SEMICONDUCTOR DEVIC		EA 2
7	15	PAHZZ	5961-00-067-3957	80131	1N965A	SEMICONDUCTOR DEVIC		EA 3
7	17	PAHZZ	5961-00-894-4326	80131	1N2970B	SEMICONDUCTOR DEVIC		EA 1
7	18	PAHZZ		81349	RW47V1271F	RESISTOR, FIXED, WIRE		EA 2
7	19	PAHZZ	5905-00-244-7911	81349	RCR32G682JS	RESISTOR, FIXED, COMP		EA 2



EL5YC006

Figure 8. 1,600 Power Supply (A3) (Sheet 1 of 3).



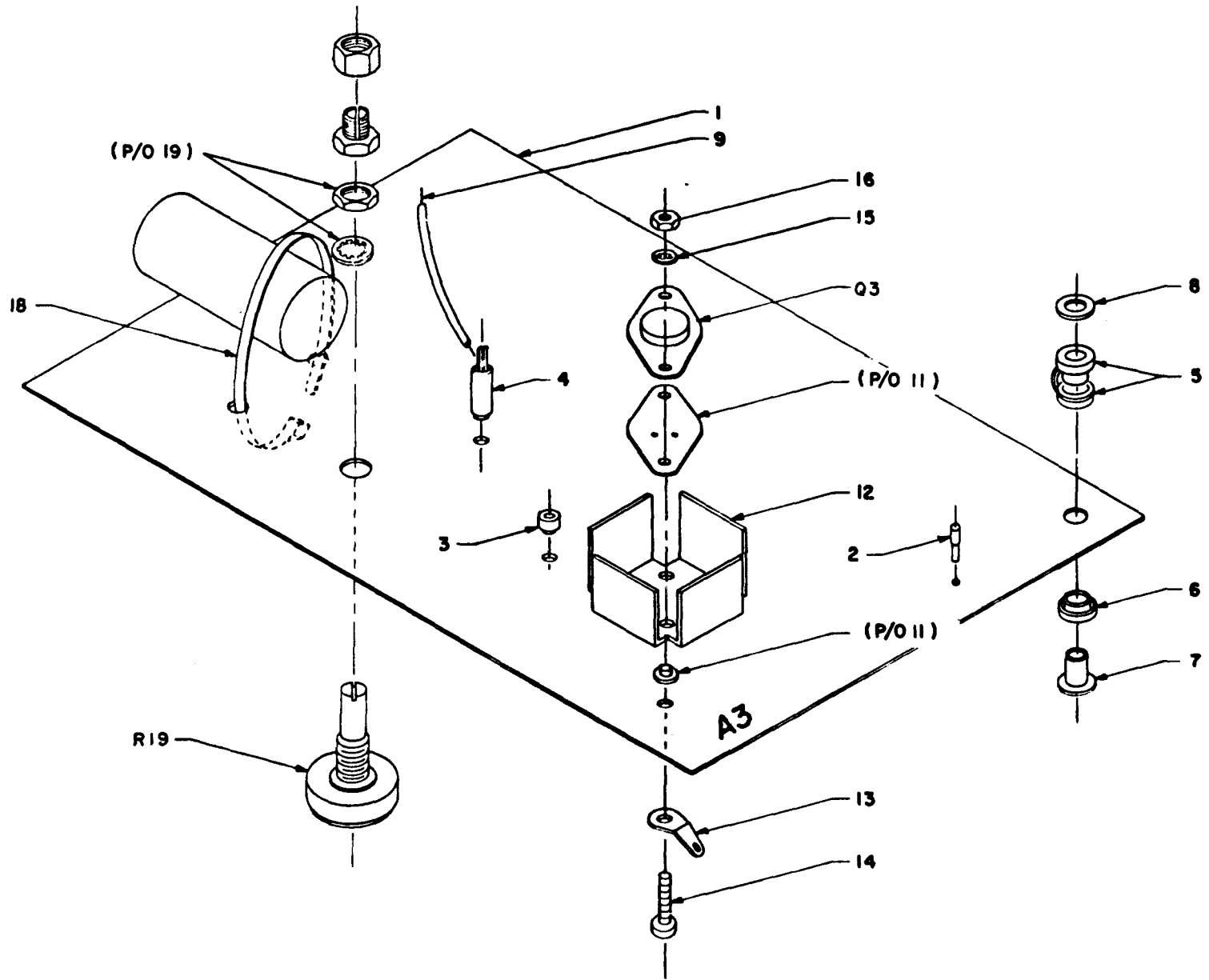


Figure 8. 1,600 Volt Power Supply Assembly (A3) (Sheet 2 of 3).

EL5YCO22

Ref Des.	Item	Ref Des.	Item	Ref Des.	Item
AR1	28	CR4	29	R5	34
C1	17	CR5	30	R6	34
C2	17	CR6	30	R7	34
C3	17	CR7	31	R8	35
C4	17	CR8	32	R9	35
		CR9	32	R10	36
C5	23			R11	37
C6	23	Q1	11	R12	38
C7	24	Q2	11	R13	39
C8	25	Q3	11	R14	40
C9	26	Q4	21	R15	41
C11	27	Q5	22	R16	42
C12	27			R17	43
		R1	33	R18	43
CR1	29	R2	33	R19	19
CR2	29	R3	33	R20	44
CR3	29	R4	33	R21	45

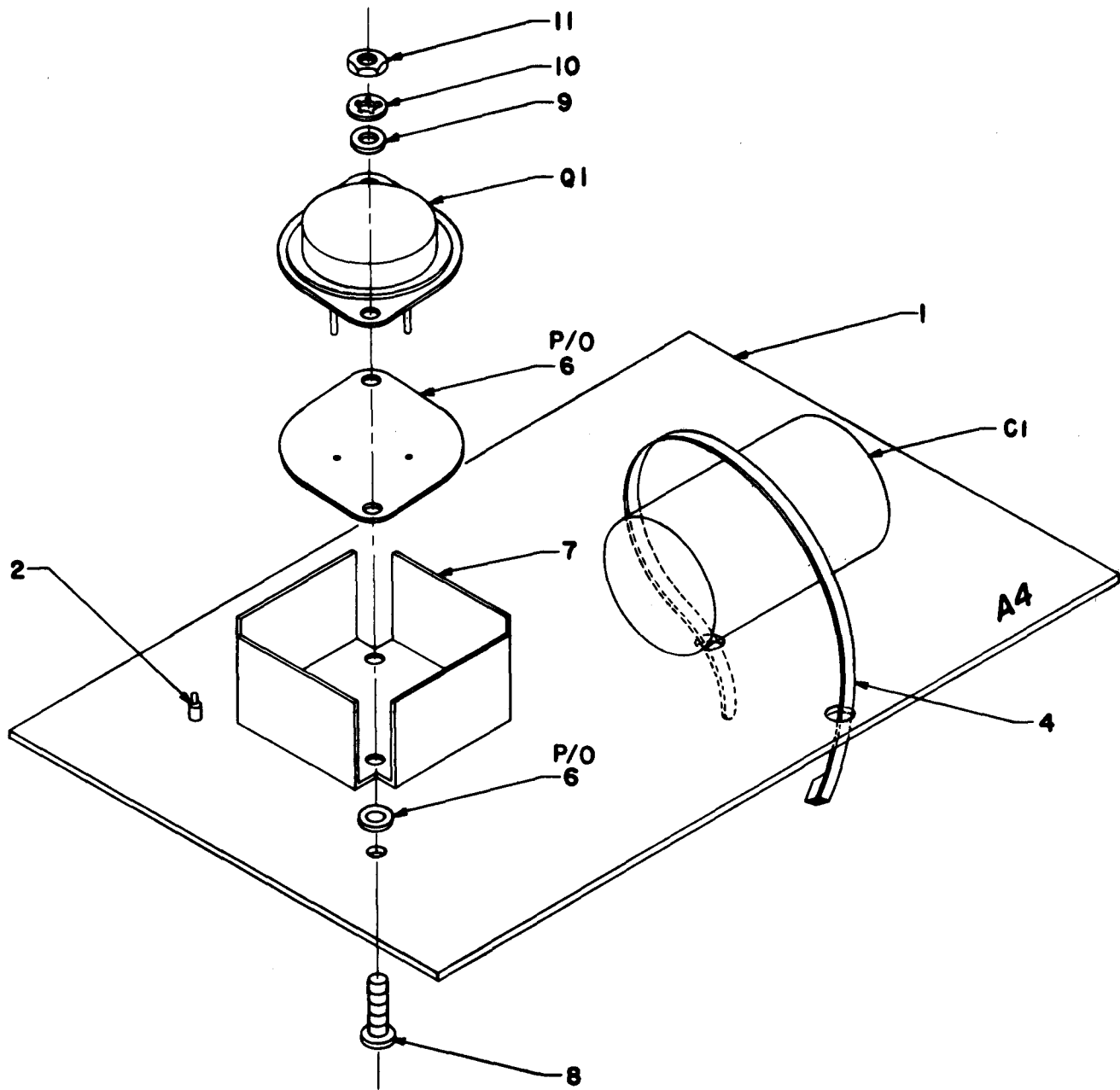
EL5YC024

Figure 8. 1,600 Volt Power Supply (A3) (Sheet 3 of 3).

SECTION II (1) ILLUSTRATION		(2)	(3)	(4)	(5)	(6)	(7)	(8)
FIG NO	(A) ITEM NO	SMR CODE	NATIONAL STOCK NUMBER	FSCM	PART NUMBER	DESCRIPTION	USABLE ON CODE	QTY INC IN UNIT
GROUP 05 1600 VOLT POWER SUPPLY (A3)								
8	1	XAHZZ		25778	200842	P C BOARD		EA 1
8	2	XAHZZ		91833	1238	TERMINAL, FEEDTHRU		EA 9
8	3	XAHZZ		32158	FTE-15	INSULATOR TEFLON		EA 7
8	4	XAHZZ		83330	93-2001	STANDOFF TEFLON		EA 27
8	5	XAHZZ		31827	6-4-1	GROMMET, NONMETALLIC		EA 4
8	6	XAHZZ		31827	5-3-1	GROMMET		EA 4
8	7	PAHZZ	5325-00-282-6633	57771	A355	EYELET, METALLIC		EA 4
8	8	PAHZZ	5310-00-765-3197	96906	MS27183-41	WASHER, FLAT		EA 4
8	9	PAHZZ	6145-00-160-4775	92194	298	WIRE, ELECTRICAL		EA 1
8	10	XAHZZ		92194	TFT-200/20	TUBING TEFLON		EA 1
8	11	PAHZZ	5961-00-455-4441	02735	40318	TRANSISTOR		EA 3
8	12	XAHZZ		25778	200841	HEAT SINK		EA 3
8	13	PAHZZ	5940-00-177-7973	96906	MS77067-1	TERMINAL, LUG		EA 1
8	14	PAHZZ	5305-00-984-4989	96906	MS35206-229	SCREW, MACHINE		EA 6
8	15	PAHZZ	5310-00-579-0079	96906	MS35333-37	WASHER, LOCK		EA 6
8	16	PAHZZ	5310-00-934-9747	96906	MS35649-262	NUT, PLAIN, HEXAGON		EA 6
8	17	PAHZZ		12674	EMW2852-40-350	CAPACITOR, FIXED, ELE		EA 4
8	18	PAHZZ		53421	T50R	STRAP, TIEDOWN, ELECT		EA 4
8	19	PAHZZ	5905-01-101-7745	80294	3852A-282-254A	RESISTOR, VARIABLE, N		EA 1
8	21	PAHZZ	5961-00-985-9073	80131	2N3053	TRANSISTOR		EA 1
8	22	PAHZZ	5961-00-892-8706	80131	2N3904	TRANSISTOR		EA 1
8	23	PAHZZ	5910-00-881-9379	00656	P82922N30	CAPACITOR, FIXED, MET		EA 2
8	24	PAHZZ		81349	CM05ED511J	CAPACITOR, FIXED, MIC		EA 1
8	25	PAHZZ	5910-00-643-9355	71590	DD502G	CAPACITOR, FIXED, CER		EA 1
8	26	PAHZZ	5910-00-099-1507	12673	32MPC1004G05	CAPACITOR, FIXED, PLA		EA 1
8	27	PAHZZ	5910-01-007-1552	84411	X463UW474550W2	CAPACITOR, FIXED, MET		EA 2
8	28	PAHZZ	6625-00-552-5395	12040	741C	AMPLIFIER		EA 1
8	29	PAHZZ	5961-00-494-5023	04713	MR991	SEMICONDUCTOR DEVIC		EA 4
8	30	PAHZZ	5961-00-944-3832	80131	1N4383	SEMICONDUCTOR DE		EA 2
8	31	PAHZZ	5961-00-804-7548	80131	1N821	SEMICONDUCTOR DEVIC		EA 1
8	32	PAHZZ	5961-00-842-9864	81349	JAN1N914	SEMICONDUCTOR DEVIC		EA 2
8	33	PAHZZ	5905-00-252-1047	81349	RCR32G274JS	RESISTOR, FIXED, COMP		EA 4
8	34	PAHZZ	5905-00-247-8690	81349	RCR32G114JS	RESISTOR, FXD COMP		EA 3
8	35	PAHZZ	5905-00-110-7620	81349	RCR07G102JS	RESISTOR, FIXED, COMP		EA 2
8	36	PAHZZ	5905-00-410-0298	81349	RC42GF152K	RESISTOR, FIXED, COMP		EA 1
8	37	PAHZZ	5905-00-116-8566	81349	RCR20G680JS	RESISTOR, FIXED, COMP		EA 1
8	38	PAHZZ	5905-00-114-5416	81349	RCR20G274JS	RESISTOR, FIXED, COMP		EA 1
8	39	PAHZZ	5905-00-104-5755	81349	RCR20G10R0JS	RESISTOR, FIXED, COMP		EA 1
8	40	PAHZZ	5905-00-816-8554	81349	RC07GF103K	RESISTOR, FIXED, COMP		EA 1

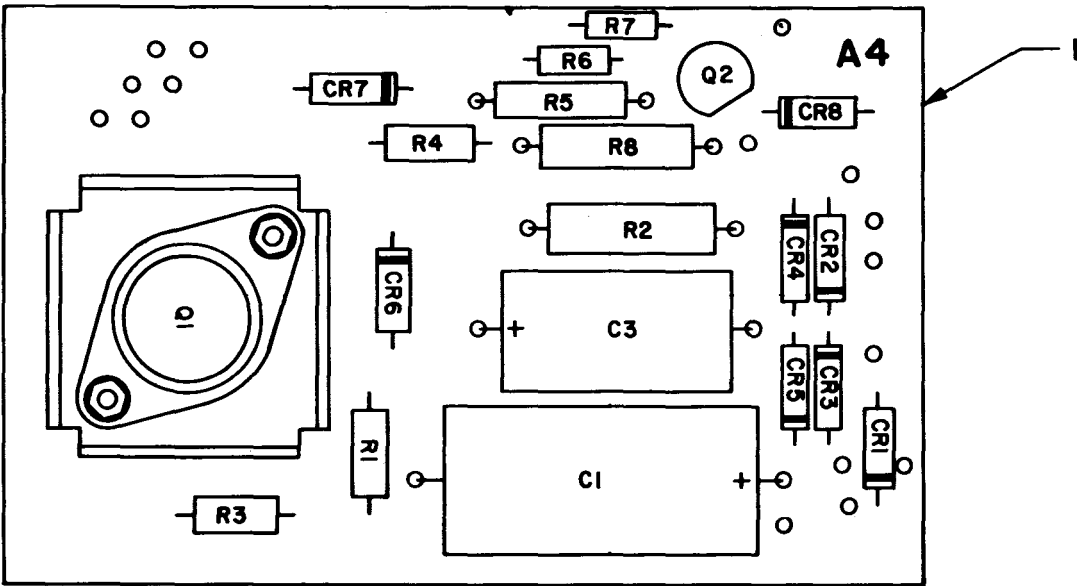
SECTION II

(1) ILLUSTRATION (A) FIG NO	(2) (B) ITEM NO	(3) SMR CODE	(4) NATIONAL STOCK NUMBER	(5) FSCM	(6) PART NUMBER	(6) DESCRIPTION	USABLE ON CODE	(7) U/M	(8) QTY INC IN UNIT
8	41	PAHZZ	5905-00-106-1282	81349	RCR20G223JS	RESISTOR, FIXED, COMP		EA	1
8	42	PAHZZ	5905-00-810-5232	81349	RN60C1272F	RESISTOR, FIXED, FILM		EA	1
8	43	PAHZZ		81349	RN2584873F	RESISTORM, FIXED, FILM		EA	2
8	44	PAHZZ	5905-00-105-7764	81349	RCR07G222JS	RESISTOR, FIXED, COMP		EA	1
8	45	PAHZZ	5905-00-111-4858	81349	RCR20G471JS	RESISTOR, FIXED, COMP		EA	1



EL5YC008

Figure 9. Low Voltage Power Supply (A4) (Sheet 1 of 2).

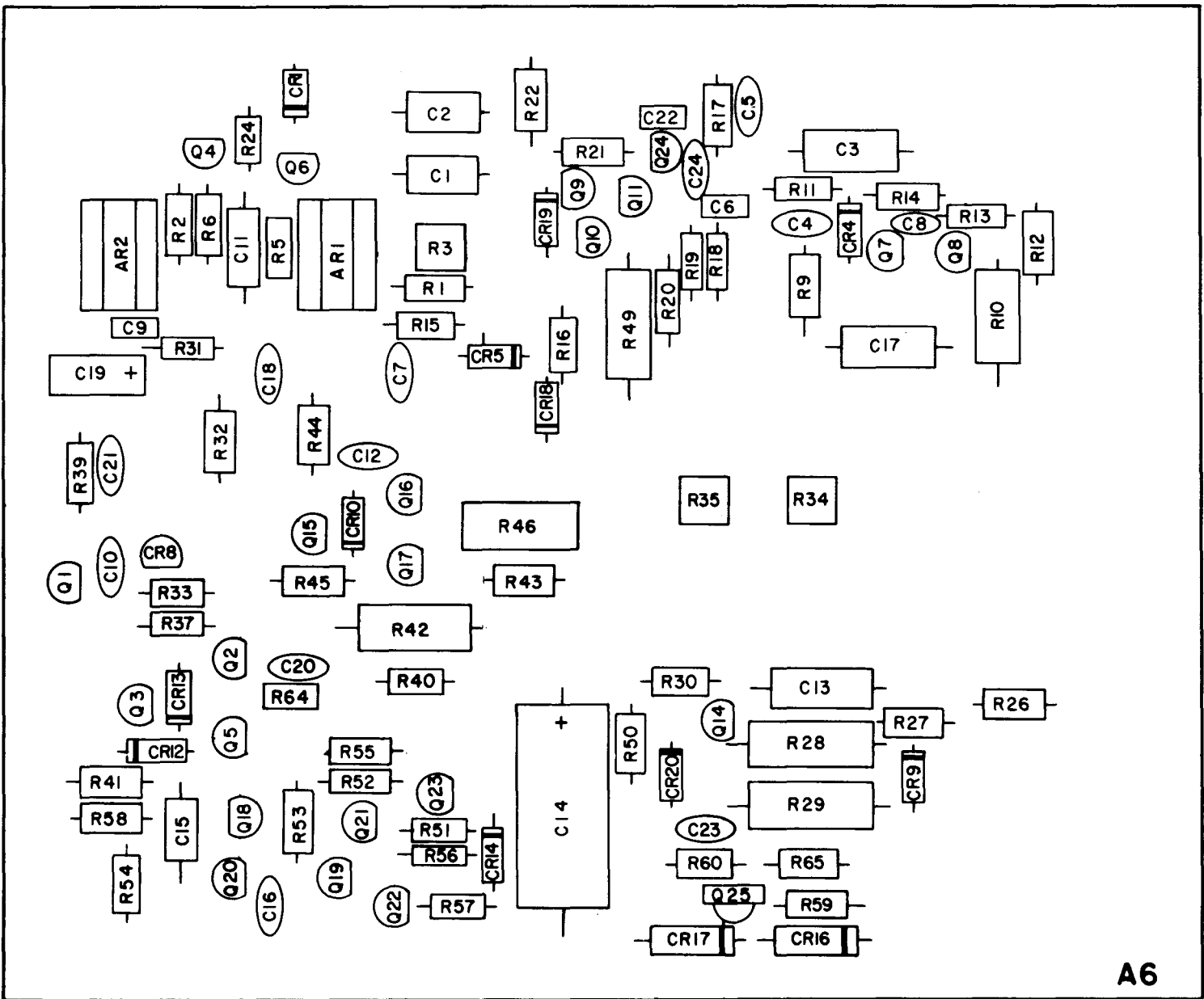


Ref Des.	Item	Ref Des.	Item	Ref Des.	Item
C1	3	CR5	14	R1	18
C3	5	CR6	15	R2	19
		CR7	16	R3	20
CR1	13	CR8	17	R4	21
CR2	14			R5	22
CR3	14	Q1	6	R6	23
CR4	14	Q2	12	R7	23
				R8	24

EL5YC007

Figure 9. Low Voltage Power Supply Assembly (A4) (Sheet 2 of 2).

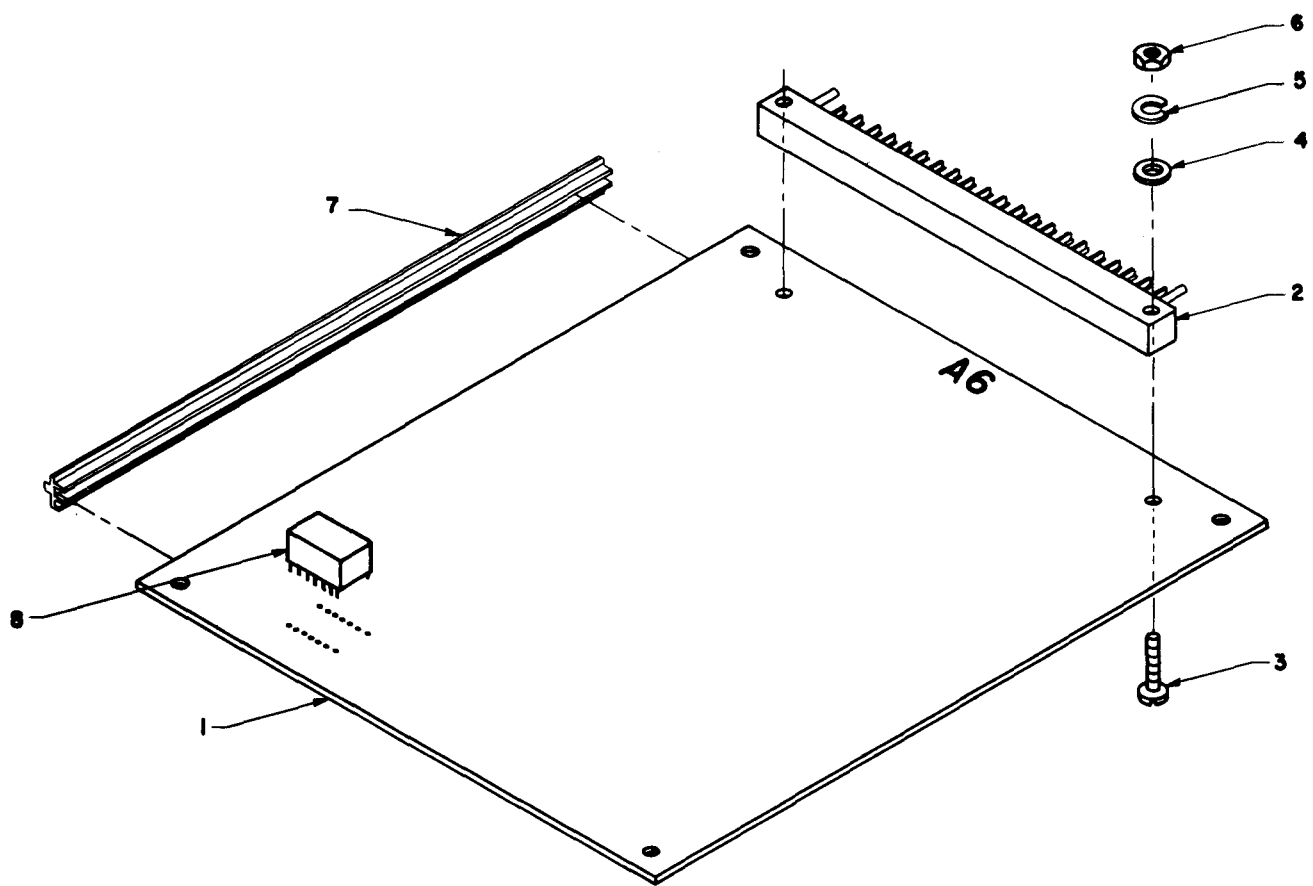
SECTION II (1) ILLUSTRATION (A) (B) FIG ITEM NO NO		(2) SMR CODE	(3) NATIONAL STOCK NUMBER	(4) FSCM	(5) PART NUMBER	(6) DESCRIPTION	USABLE ON CODE	(7) U/M	(8) QTY INC IN UNIT
GROUP 06 LOW VOLTAGE POWER SUPPLY (A4)									
9	1	XAHZZ		25778	200844	P C BOARD		EA	1
9	2	XAHZZ		91833	1237	TERMINAL WIRE		EA	26
9	3	PAHZZ		12674	EMW2852-40-350	CAPACITOR, FIXED, ELE		EA	1
9	4	PAHZZ		53421	T50R	STRAP, TIEDOWN, ELECT		EA	1
9	5	PAHZZ	5910-00-994-6910	73445	C437AR/H250	CAPACITOR, FIXED, ELE		EA	1
9	6	PAHZZ	5961-00-199-6008	81349	JAN2N3055	TRANSISTOR		EA	1
9	7	XAHZZ		25778	200843	HEAT SINK		EA	1
9	8	PAHZZ	5305-00-984-4989	96906	MS35206-229	SCREW, MACHINE		EA	2
9	9	PAHZZ	5310-00-167-0832	81350	AN960-6L	WASHER, FLAT		EA	2
9	10	PAHZZ	5310-00-167-0721	96906	MS35333-41	WASHER, LOCK		EA	3
9	11	PAHZZ	5310-00-680-6627	96906	MS25082-1	NUT, PLAIN, HEXAGON		EA	2
9	12	PAHZZ	5961-00-901-4862	81349	JAN2N3638	TRANSISTOR		EA	1
9	13	PAHZZ	5961-00-494-5023	04713	MR991	SEMICONDUCTOR DEVIC		EA	1
9	14	PAHZZ	5961-00-105-7731	81349	JAN1N4383	SEMICONDUCTOR DEVIC		EA	4
9	15	PAHZZ	5961-00-865-8625	80131	1N971B	SEMICONDUCTOR DEVIC		EA	1
9	16	PAHZZ	5961-00-893-6763	80131	1N3024	SEMICONDUCTOR DEVIC		EA	1
9	17	PAHZZ	5961-00-821-2309	81349	JAN1N751A	SEMICONDUCTOR DEVIC		EA	1
9	18	PAHZZ	5905-00-295-3410	81349	RC20GF473K	RESISTOR, FIXED, COMP		EA	1
9	19	PAHZZ		81349	RW74042R4F	RESISTOR, FIXED, WIRE		EA	1
9	20	PAHZZ	5905-00-116-8566	81349	RCR20G680JS	RESISTOR, FIXED, COMP		EA	1
9	21	PAHZZ	5905-00-111-4858	81349	RCR20G471JS	RESISTOR, FIXED, COMP		EA	1
9	22	PAHZZ	5905-00-155-0081	81349	RCR42G272JS	RESISTOR, FIXED, COMP		EA	1
9	23	PAHZZ	5905-00-126-6683	81349	RCR07G332JS	RESISTOR, FIXED, COMP		EA	2
9	24	PAHZZ		81349	RW7444950F	RESISTOR, FIXED, WIRE		EA	1



EL5Y0009

Figure 10. Modulator Circuit Board Assembly (A6) (Sheet 1 of 3).





EL5YCO10

Figure 10. Modular Circuit Board Assembly (A6) (Sheet 2 of 3).

Ref Des.	Item	Ref Des.	Item	Ref Des.	Item
AR1	58	CR19	25	R17	39
AR2	59	CR20	25	R18	33
C1	9	Q1	29	R19	43
C2	10	Q2	29	R20	44
C3	11	Q3	29	R21	45
C4	12	Q4	29	R22	39
C5	13	Q5	29	R24	42
C6	14	Q6	29	R26	44
C7	15	Q7	29	R27	43
C8	14	Q8	29	R28	46
C9	13	Q9	29	R29	46
C10	16	Q10	29	R30	44
C11	10	Q11	29	R31	47
C12	17	Q14	29	R32	48
C13	11	Q15	29	R33	48
C14	18	Q16	29	R34	49
C15	19	Q17	29	R35	50
C16	20	Q18	30	R37	48
C17	21	Q19	29	R39	35
C18	15	Q20	29	R40	44
C19	22	Q21	29	R41	51
C20	16	Q22	29	R42	52
C21	16	Q23	29	R43	44
C22	23	Q24	29	R44	33
C23	20	Q25	31	R45	45
C24	24			R46	52
CR1	25	R1	32	R49	52
CR4	25	R2	33	R50	42
CR5	25	R3	34	R51	53
CR8	26	R5	35	R52	54
CR9	25	R6	36	R53	44
CR10	25	R9	37	R54	39
CR12	25	R10	38	R55	55
CR13	25	R11	39	R56	39
CR14	27	R12	40	R57	39
CR16	28	R13	41	R58	53
CR17	28	R14	42	R59	56
CR18	25	R15	39	R60	57
		R16	33	R64	33
				R65	33

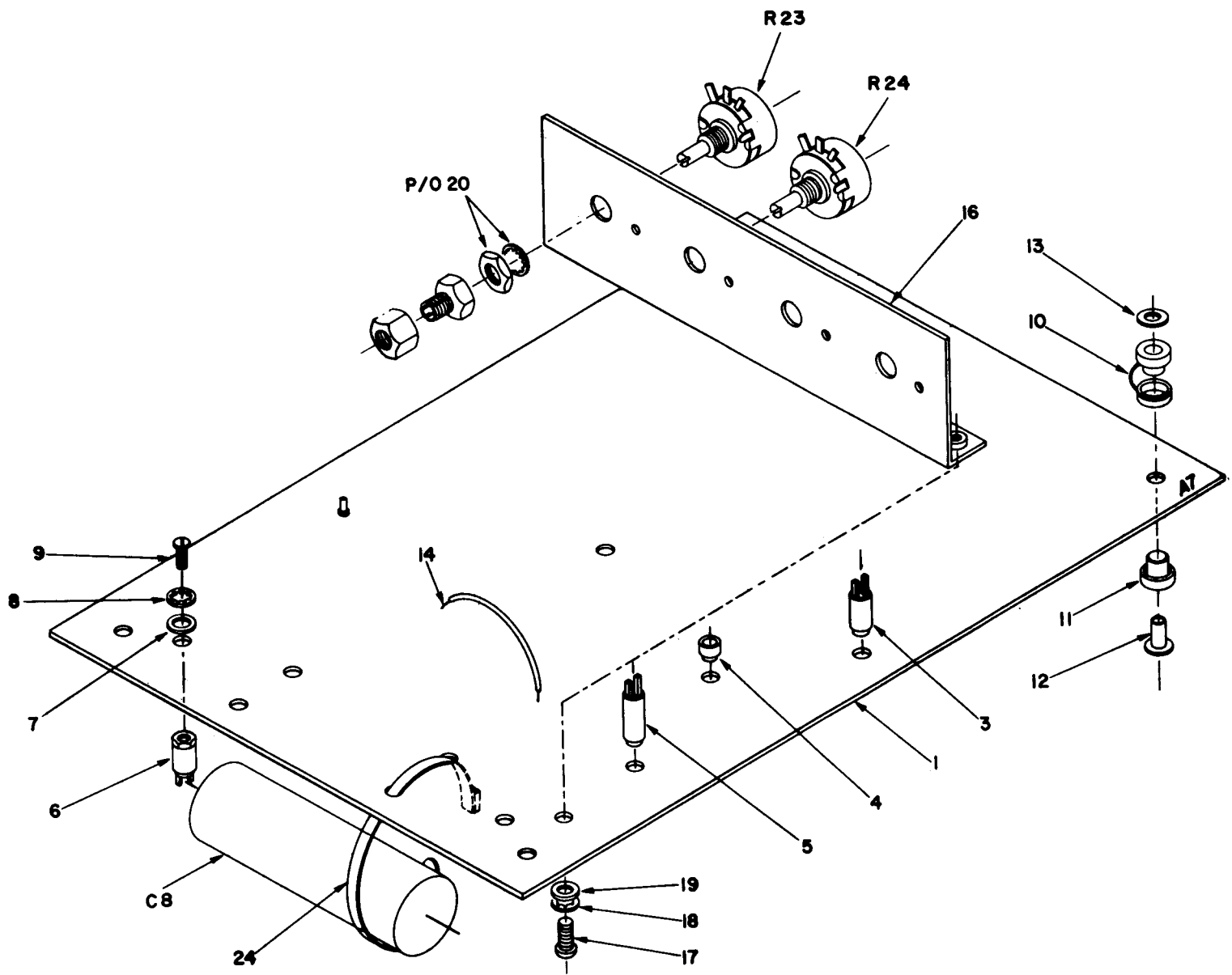
EL5YC025

Figure 10. Modulator Circuit Board Assembly (A6) (Sheet 3 of 3).

SECTION II		(2)	(3)	(4)	(5)	(6)	(7)	(8)
(1)	ILLUSTRATION					DESCRIPTION		QTY
FIG	(A) (B) ITEM	SMR	NATIONAL STOCK	FSCM	PART		USABLE ON CODE	INC
NO	NO	CODE	NUMBER		NUMBER			IN
								UNIT
GROUP 07 MODULATOR CIRCUIT BOARD								
ASSEMBLY (A6)								
10	1	XDHZZ		25778	202966	PRINTED WIRING BD		EA 1
10	2	XAHZZ		31781	007023041000001	PLUG		EA 1
10	3	PAHZZ	5305-00-054-6651	96906	MS51957-27	SCREW,MACHINE		EA 2
10	4	PAHZZ		96906	MS51795-804	WASHER,FLAT		EA 2
10	5	PAHZZ	5310-00-933-8118	96906	MS35338-135	WASHER,LOCK		EA 2
10	6	PAHZZ	5310-00-934-9748	96906	MS35649-244	NUT,PLAIN,HEXAGON		EA 2
10	7	XAHZZ		25778	202372	STIFFENER		EA 2
10	8	PAHZZ		96906	MS-2-14-110-N-B	IC SOCKET		EA 2
10	9	PAHZZ		09023	WMF1556	CAPACITOR,FIXED,ELE		EA 1
10	10	PAHZZ	5910-00-449-0009	14655	WMF1D56	CAPACITOR,FIXED,PLA		EA 2
10	11	PAHZZ	5910-01-092-9392	30039	PMG105K251	CAPACITOR FXD FILM		EA 2
10	12	PAHZZ		56289	5HK D10	CAPACITOR,FIXED,CER		EA 1
10	13	PAHZZ		24138	PMG472K631	CAPACITOR,FIXED,ELE		EA 2
10	14	PAHZZ	5910-00-010-8666	81349	M39014/01-1357	CAPACITOR,FIXED,CER		EA 2
10	15	PAHZZ		24138	CD104Z050F	CAPACITOR,FIXED,CER		EA 2
10	16	PAHZZ		81349	CM05ED511J	CAPACITOR,FIXED,MIC		EA 3
10	17	PAHZZ	5910-01-049-6560	24138	EM22-1A	CAPACITOR,FIXED,PLA		EA 1
10	18	PAHZZ	5910-01-026-5812	24138	TDA1000M16T	CAPACITOR,FIXED,ELE		EA 1
10	19	PAHZZ	5910-00-914-1379	14655	WMF1D27J	CAPACITOR,FIXED,PLA		EA 1
10	20	PAHZZ		24138	EM103K101	CAPACITOR		EA 2
10	21	PAHZZ	5910-01-092-9395	30039	PMG474K251	CAPAC,FXD,PLAS,DIEL		EA 1
10	22	PAHZZ	5910-00-113-5475	81349	CSR13E106K	CAPACITOR,FIXED,ELE		EA 1
10	23	PAHZZ	5910-01-030-1771	81349	CMR05E200J0DR	CAPACITOR,FIXED,MIC		EA 1
10	24	PAHZZ	5910-00-241-6513	71590	DD102	CAPACITOR,FIXED,CER		EA 1
10	25	PAHZZ	5961-00-938-1135	81349	JAN1N4148	SEMICONDUCTOR DEVIC		EA 10
10	26	PAHZZ	5961-00-106-3698	80131	2N6027	SEMICONDUCTOR DEVIC		EA 1
10	27	PAHZZ	5961-00-241-3410	80131	1N5234A	SEMICONDUCTOR DEVIC		EA 1
10	28	PAHZZ	5961-01-044-4173	04713	MR250-2	SEMICONDUCTOR DEVIC		EA 2
10	29	PAHZZ	5961-01-110-4395	81349	JAN2N3904	TRANSISTOR		EA 21
10	30	PAHZZ	5961-00-847-9782	80131	2N3905	TRANSISTOR		EA 1
10	31	PAHZZ	5961-00-828-0719	04713	MJE-340	TRANSISTOR		EA 1
10	32	PAHZZ		81349	RNR60D8453	RESISTOR,FIXED,FILM		EA 1
10	33	PAHZZ	5905-00-110-7620	81349	RCR07G102JS	RESISTOR,FIXED,COMP		EA 6
10	34	PAHZZ	5905-00-335-8855	80294	3389P-1-503	RESISTOR,VARIABLE,N		EA 1
10	35	PAHZZ	5905-00-110-7620	81349	RCR07G102JS	RESISTOR,FIXED,COMP		EA 2
10	36	PAHZZ	5905-00-111-4750	81349	RCR07G301JS	RESISTOR,FIXED,COMP		EA 1
10	37	PAHZZ	5905-00-110-0196	81349	RCR20G102JS	RESISTOR,FIXED,COMP		EA 1
10	38	PAHZZ	5905-00-121-9861	81349	RCR32G102JS	RESISTOR,FIXED,COMP		EA 1

SECTION II									
(1)	(2)	(3)	(4)	(5)	(6)		(7)	(8)	
ILLUSTRATION					DESCRIPTION			QTY	
(A)	(B)	NATIONAL		PART				INC	
FIG	ITEM	STOCK		NUMBER				IN	
NO	NO	NUMBER	FSCM			USABLE ON CODE	U/M	UNIT	
10	39	PAHZZ 5905-00-816-8554	81349	RCR07G103JS	RESISTOR, FIXED, COMP		EA	7	
10	40	PAHZZ 5905-00-110-0388	81349	RCR07G104JS	RESISTOR, FIXED, COMP		EA	1	
10	41	PAHZZ 5905-00-114-0711	81349	RCR07G472JS	RESISTOR, FIXED, COMP		EA	1	
10	42	PAHZZ 5905-00-141-0717	81349	RCR07G473JS	RESISTOR, FIXED, COMP		EA	3	
10	43	PAHZZ 5905-00-105-7764	81349	RCR07G222JS	RESISTOR, FIXED, COMP		EA	2	
10	44	PAHZZ 5905-00-114-0711	81349	RCR07G472JS	RESISTOR, FIXED, COMP		EA	6	
10	45	PAHZZ 5905-00-119-3503	81349	RCR07G271JS	RESISTOR, FIXED, COMP		EA	2	
10	46	PAHZZ 5905-00-184-7703	81349	RCR42G103JS	RESISTOR, FIXED, COMP		EA	2	
10	47	PAHZZ 5905-00-120-9154	81349	RCR07G471JS	RESISTOR, FIXED, COMP		EA	1	
10	48	PAHZZ 5905-00-141-1183	81349	RCR07G101JS	RESISTOR, FIXED, COMP		EA	3	
10	49	PAHZZ 5905-00-261-7326	80294	3389P-1-102	RESISTOR, VARIABLE, N		EA	1	
10	50	PAHZZ 5905-00-250-4797	32997	3389-P-1-502	RESISTOR, VARIABLE, N		EA	1	
10	51	PAHZZ 5905-00-119-3503	81349	RCR07G271JS	RESISTOR, FIXED, COMP		EA	1	
10	52	PAHZZ 5905-00-689-4716	81349	RCR42G331JS	RESISTOR, FIXED, COMP		EA	3	
10	53	PAHZZ 5905-00-116-8554	81349	RCR07G105JS	RESISTOR, FIXED, COMP		EA	2	
10	54	PAHZZ 5905-00-141-0717	81349	RCR07G473JS	RESISTOR, FIXED, COMP		EA	1	
10	55	PAHZZ 5905-00-118-4559	81349	RCR07G333JS	RESISTOR, FIXED, COMP		EA	1	
10	56	PAHZZ 5905-00-192-3987	81349	RC20GF104K	RESISTOR, FIXED, COMP		EA	1	
10	57	PAHZZ 5905-00-126-6683	81349	RCR07G332JS	RESISTOR, FIXED, COMP		EA	1	
10	58	PAHZZ 5962-00-355-4138	04713	MS14001CP	MICROCIRCUIT, DIGITA		EA	1	
10	59	PAHZZ 5962-00-369-7607	81349	M38510/00401BCB	MICROCIRCUIT, DIGITA		EA	1	

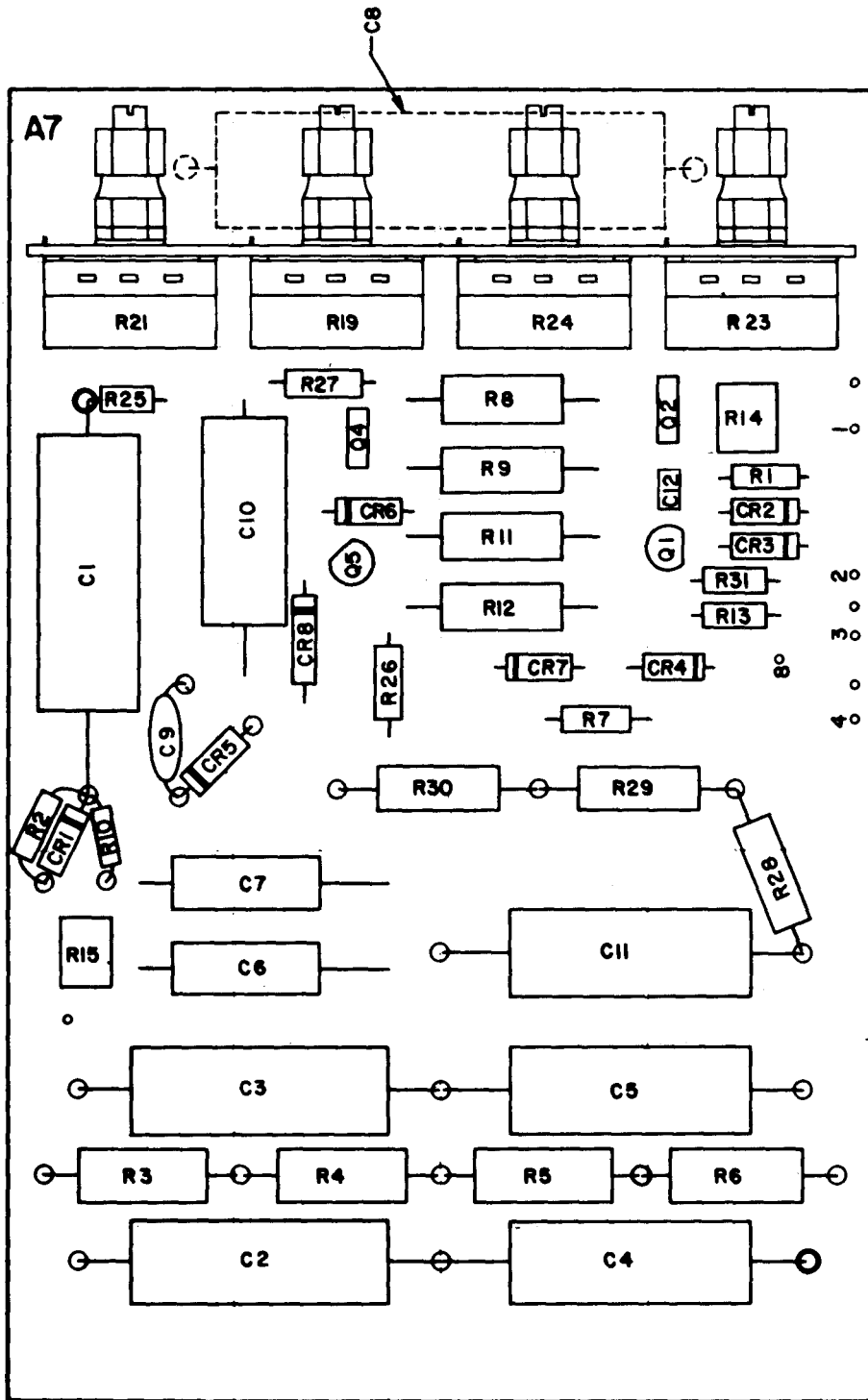




**NOTE:**  
 ITEMS 2, 15 AND 21  
 NOT USED

Figure 11 Keyer and Tracker Assembly (A7) (Sheet 1 of 3).

EL5YC012



EL5YCO11

Figure 11. Keyer and Tracker Assembly (A7) (Sheet 2 of 3).

Ref Des.	Item	Ref Des.	Item	Ref Des.	Item
C1	25	CR8	32	R14	46
C2	26			R15	47
C3	26	Q1	35	R19	20
C4	26	Q2	36	R21	20
C5	26	Q4	37	R23	20
C6	27	Q5	38	R24	22
C7	27			R25	48
C8	23	R1	39	R26	49
C9	28	R2	40	R27	50
C10	29	R3	41	R28	43
C11	26	R4	41	R29	43
C12	51	R5	41	R30	43
		R6	41	R31	44
CR1	30	R7	42		
CR2	30	R8	43		
CR3	30	R9	43		
CR4	31	R10	44		
CR5	32	R11	43		
CR6	33	R12	43		
CR7	34	R13	45		

EL5YC026

Figure 11. Keyer and Tracker Assembly (A7) (Sheet 3 of 3).



SECTION II		(2)	(3)	(4)	(5)	(6)	(7)	(8)	
(1)	ILLUSTRATION					DESCRIPTION		QTY	
FIG	(A) (B)	SMR	NATIONAL	FSCM	PART		USABLE ON CODE	INC	
NO	NO	CODE	STOCK		NUMBER			IN	
			NUMBER					UNIT	
GROUP 08 KEYS AND TRACKER ASSEMBLY (A7)									
11	1	XAHZZ		25778	200846	P C BOARD		EA	1
11	3	XAHZZ		83330	93-2001	STANDOFF TEFLON		EA	20
11	4	XAHZZ		32158	FTE15	INSULATED TEFLON		EA	2
11	5	XAHZZ		83330	93-2014	STANDOFF TEFLON		EA	2
11	6	PAHZZ	5940-01-028-8916	88245	766	TERMINAL, STUD		EA	2
11	7	PAHZZ	5310-00-951-4679	96906	MS15795-203	WASHER, FLAT		EA	2
11	8	PAHZZ	5310-00-193-7577	96906	MS35333-36	WASHER, LOCK		EA	2
11	9	PAHZZ	5305-00-405-8960	96906	MS35223-13	SCREW, MACHINE		EA	2
11	10	XAHZZ		31827	6-4-1	GROMMET, NONMETALLIC		EA	4
11	11	PAHZZ	5325-01-102-2391	31827	5-3-1	GROMMET		EA	4
11	12	PAHZZ	5325-00-282-6633	57771	A355	EYELET, METALLIC		EA	4
11	13	PAHZZ	5310-00-765-3197	96906	MS27183-41	WASHER, FLAT		EA	4
11	14	PAHZZ	6145-00-160-4775	92194	298	WIRE, ELECTRICAL		EA	1
11	16	XAHZZ		25778	203136	RESISTOR BRACKET		EA	1
11	17	PAHZZ	5305-00-984-4984	96906	MS35206-227	SCREW, MACHINE		EA	3
11	18	PAHZZ	5310-00-579-0079	96906	MS35333-37	WASHER, LOCK		EA	2
11	19	PAHZZ	5310-00-622-9531	96906	NAS620-6	WASHER, FLAT		EA	3
11	20	PAHZZ	5905-00-644-6693	81349	RV4NAYS104A	RESISTOR, VARIABLE, N		EA	3
11	22	PAHZZ	5905-00-552-5476	81349	RV4NAYS254A	RESISTOR, VARIABLE, N		EA	1
11	23	PAHZZ		07263	KM9-30-100	CAPACITOR		EA	1
11	24	PAHZZ		53421	T50R	STRAP, TIEDOWN, ELECT		EA	2
11	25	PAHZZ	5910-00-985-0457	14655	PKM16S47	CAPACITOR, FIXED, PAP		EA	1
11	26	PAHZZ	5910-00-881-9379	00656	P82922N30	CAPACITOR, FIXED, MET		EA	5
11	27	PAHZZ		24138	CM1600-2A	CAPACITOR		EA	2
11	28	PAHZZ		56289	A1C92A10	CAPACITOR, FIXED, CER		EA	1
11	29	PAHZZ	5910-00-994-6910	73445	C437AR/H250	CAPACITOR, FIXED, ELE		EA	1
11	30	PAHZZ	5961-00-850-0563	80131	1N4750A	SEMICONDUCTOR DEVIC		EA	3
11	31	PAHZZ	5961-01-006-6511	81349	1N4372	SEMICONDUCTOR DEVIC		EA	1
11	32	PAHZZ	5961-00-494-5023	04713	MR991	SEMICONDUCTOR DEVIC		EA	2
11	33	PAHZZ	5961-00-880-2938	81349	1N4003	SEMICONDUCTOR DEVIC		EA	1
11	34	PAHZZ	5961-00-854-8470	81349	JAN1N3070	SEMICONDUCTOR DEVICE		EA	1
11	35	PAHZZ	5961-01-110-4395	81349	JAN2N3904	TRANSISTOR		EA	1
11	36	PAHZZ	5961-00-828-0719	04713	MJE340	TRANSISTOR		EA	1
11	37	PAHZZ	5961-00-901-4862	81349	JAN2N3638	TRANSISTOR		EA	1
11	38	PAHZZ	5961-00-985-9073	80131	2N3053	TRANSISTOR		EA	1
11	39	PAHZZ	5905-00-110-7620	81349	RCR07G102JS	RESISTOR, FIXED, COMP		EA	1
11	40	PAHZZ	5905-00-116-8555	81349	RCR07G153JS	RESISTOR, FIXED, COMP		EA	1
11	41	PAHZZ		81349	RC42GF563K	RESISTOR, FI TASK 4A		EA	4
11	42	PAHZZ	5905-00-279-1883	81349	RC20GF335J	RESISTOR, FIXED, COMP		EA	1

## SECTION II

(1) ILLUSTRATION (A) FIG NO	(2) (B) ITEM NO	(3) SMR CODE	(4) NATIONAL STOCK NUMBER	(5) FSCM	(6) PART NUMBER	(6) DESCRIPTION	USABLE ON CODE	(7) U/M	(8) QTY INC IN UNIT
11	43	PAHZZ	5905-00-279-2675	81349	RC42GF333K	RESISTOR, FIXED, COMP		EA	7
11	44	PAHZZ	5905-00-119-3503	81349	RCR07G271JS	RESISTOR, FIXED, COMP		EA	2
11	45	PAHZZ	5905-00-141-0717	81349	RCR07G473JS	RESISTOR, FIXED, COMP		EA	1
11	46	PAHZZ	5905-00-256-8854	12697	U39-300	RESISTOR, VARIABLE, W		EA	1
11	47	PAHZZ	5905-01-042-8808	11237	BF51312	RESISTOR, VARIABLE, W		EA	1
11	48	PAHZZ	5905-00-141-1183	81349	RCR07G101JS	RESISTOR, FIXED, COMP		EA	1
11	49	PAHZZ	5905-00-111-8357	81349	RCR20G681JS	RESISTOR, FIXED, COMP		EA	1
11	50	PAHZZ	5905-00-295-3410	81349	RC20GF473K	RESISTOR, FIXED, COMP		EA	1
11	51	PAHZZ	5910-00-124-0659	81349	M39014/01-1575	CAPACITOR, FIXED, CER		EA	1



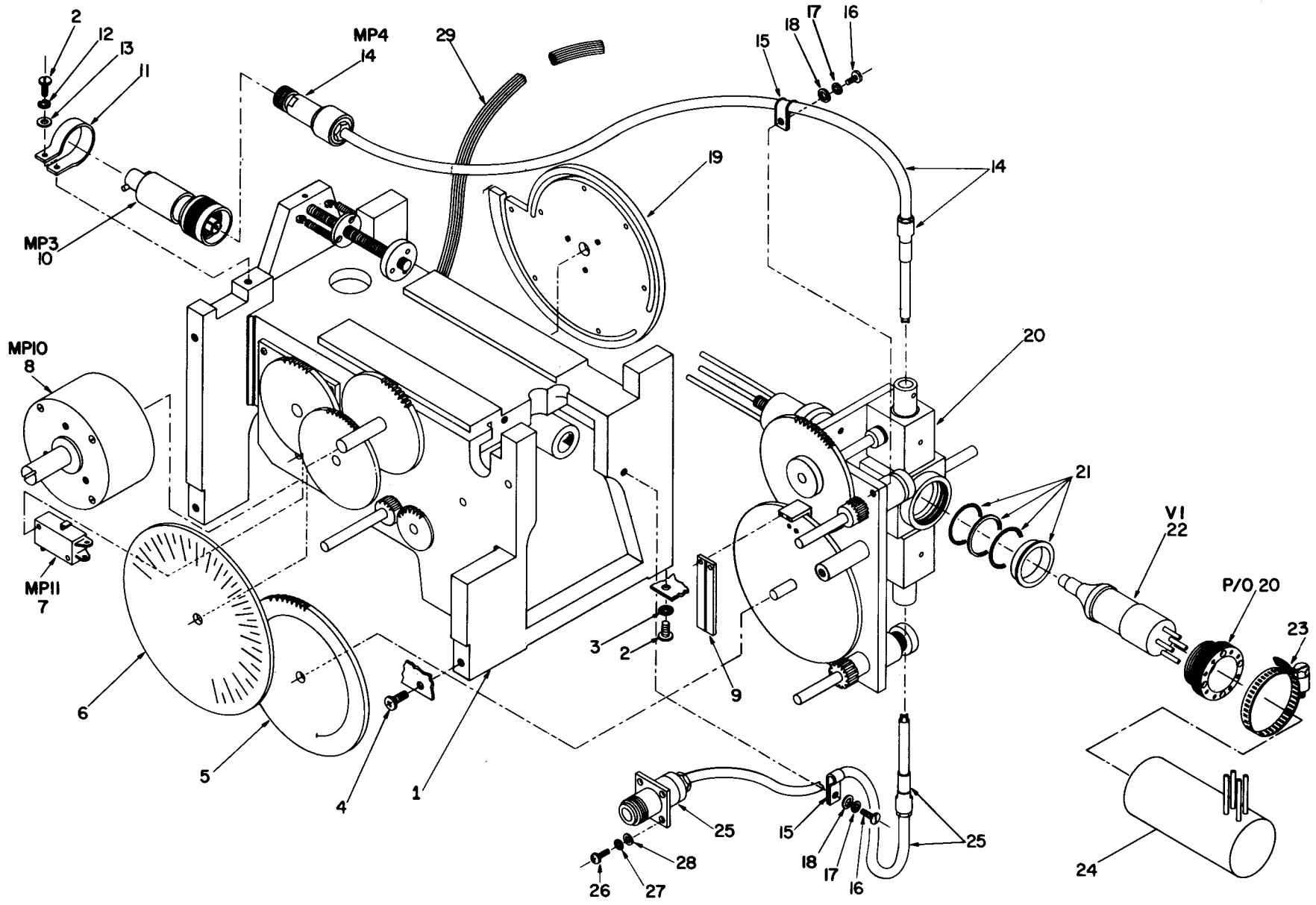
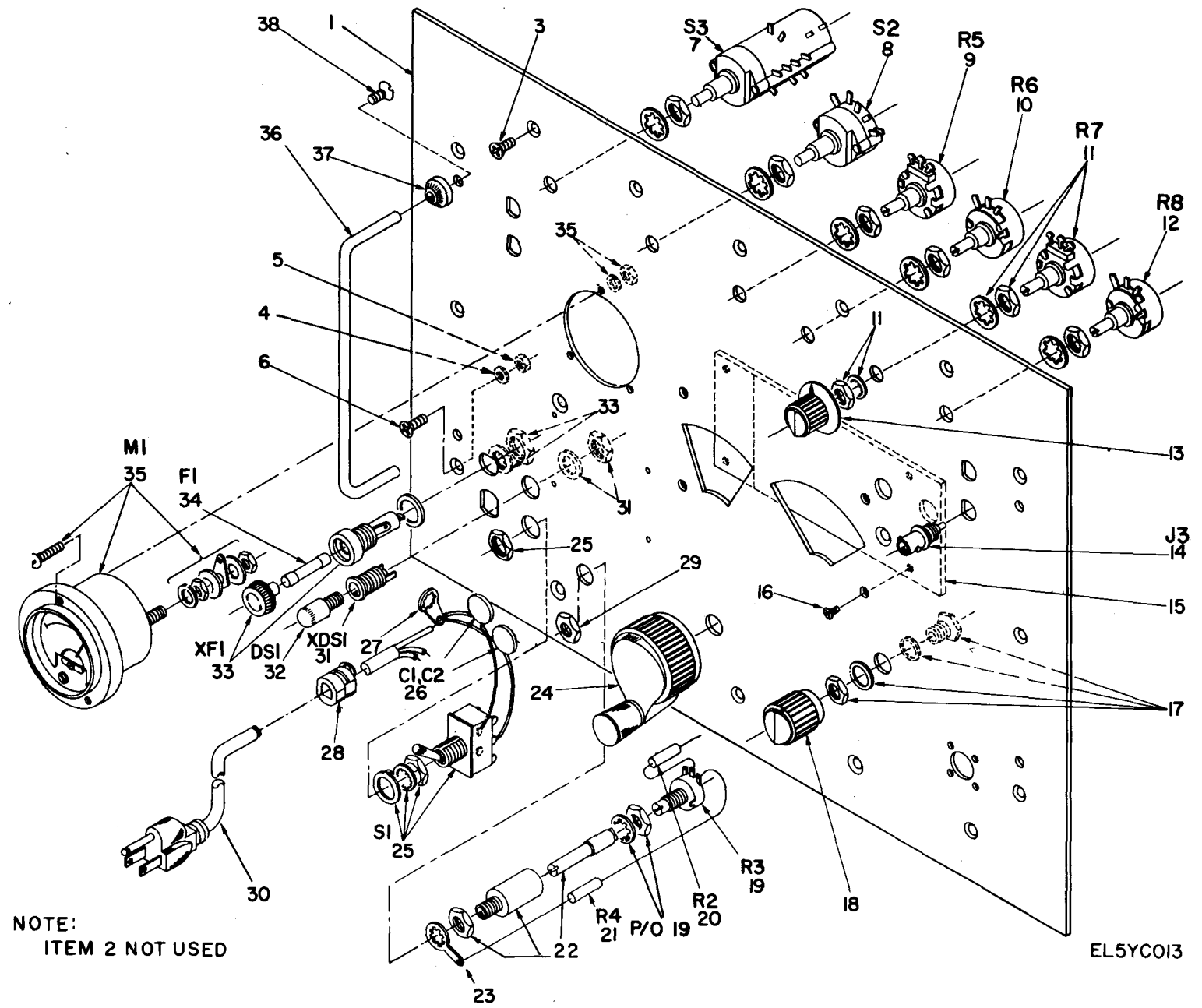


Figure 12. RF Tuning Unit Assembly (A11).

EL5YC019

SECTION II (1) ILLUSTRATION (A) (B) FIG ITEM NO NO		(2) SMR CODE	(3) NATIONAL STOCK NUMBER	(4) FSCM	(5) PART NUMBER	(6) DESCRIPTION	USABLE ON CODE	(7) U/M	(8) QTY INC IN UNIT
GROUP 09 RF TUNING UNIT ASSEMBLY (A11)									
12	1	PAHZZ		25778	100326	FREQUENCY DRIVE ASS		EA	1
12	2	PAHZZ	5305-00-984-6193	96906	MS35206-245	SCREW,MACHINE		EA	2
12	3	PAHZZ	5310-00-559-0070	96906	MS35333-38	WASHER, LOCK		EA	2
12	4	PAHZZ		96906	MS35191-271	SCREW,MACHINE		EA	4
12	5	PAHZZ	5355-01-013-4026	25778	100451	DIAL, SCALE		EA	1
12	6	PAHZZ	5355-01-014-4382	25778	100450	DIAL, SCALE		EA	1
12	7	PAHZZ	5930-01-006-6214	25778	100449	SWITCH, SENSITIVE		EA	1
12	8	PAHZZ	5905-01-017-1169	25778	100448	RESISTOR, VARIABLE, W		EA	1
12	9	PAHZZ		25778	100452	INDICATOR WINDOW		EA	1
12	10	PAHZZ	5935-01-006-6254	25778	100443	POWER SET ASSEMBLY		EA	1
12	11	PAHZZ	5340-00-682-1617	96906	MS21919-DG-12	CLAMP, LOOP		EA	1
12	12	PAHZZ	5310-00-045-3299	88044	AN935-8L	WASHER, LOCK		EA	1
12	13	PAHZZ	5310-00-080-6004	96906	MS27183-14	WASHER, FLAT		EA	1
12	14	PAHZZ	6625-01-006-6255	25778	100444	POWER SET PROBE ASS		EA	1
12	15	PAHZZ	5340-00-827-6389	83330	773	CLAMP, LOOP		EA	2
12	16	PAHZZ	5305-00-984-4988	96906	MS35206-228	SCREW,MACHINE		EA	2
12	17	PAHZZ	5310-00-579-0079	96906	MS35333-37	WASHER, LOCK		EA	2
12	18	PAHZZ	5310-00-167-0832	81350	AN960-6L	WASHER, FLAT		EA	2
12	19	PAHZZ		25778	100446	CAM		EA	1
12	20	PAHZZ		25778	100327	GEARBOX OSCILLATOR		EA	1
12	21	PAHZZ		25778	100454	KLYSTRN RETNG KIT		EA	1
12	22	PAHZZ	5960-01-006-6507	25778	348055	ELECTRON TUBE		EA	1
12	23	PAHZZ		08484	20	CLAMP HOSE		EA	1
12	24	XAHZZ		25778	100447	KLYSTRN COVER ASSY		EA	1
12	25	PAHZZ	6625-01-009-0656	25778	100445	ATTENUATOR, FIXED		EA	1
12	26	PAHZZ	5305-00-054-5649	96906	MS51957-15	SCREW,MACHINE		EA	1
12	27	PAHZZ	5310-01-099-7944	25778	363674	WASHER, LOCK		EA	4
12	28	PAHZZ	5310-00-951-4679	96906	MS27183-3	WASHER, FLAT		EA	4
12	29	PAHZZ		25778	100515	HARNES RF		EA	1



NOTE:  
ITEM 2 NOT USED

EL5YCO13

Figure 13. Front Panel Assembly (A12).

SECTION II (1) ILLUSTRATION (A) (B) FIG ITEM NO NO		(2) SMR CODE	(3) NATIONAL STOCK NUMBER	(4) FSCM	(5) PART NUMBER	(6) DESCRIPTION	USABLE ON CODE	(7) U/M	(8) QTY INC IN UNIT
GROUP 10 FRONT PANEL ASSEMBLY (A12)									
13	1	XAHZZ		25778	200968	FRONT PANEL DRILLED		EA	1
13	3	PAHZZ	5305-00-958-5477	96906	MS35190-254	SCREW,MACHINE		EA	12
13	4	PAHZZ	5310-00-045-3299	96906	MS35338-42	LOCKWASHER SPLIT		EA	1
13	5	PAHZZ	5310-00-176-8135	88044	AN340-8	NUT,PLAIN,HEXAGON		EA	1
13	6	PAHZZ	5305-00-958-5477	96906	MS35190-254	SCREW,MACHINE		EA	1
13	7	PAHZZ		25778	359050	SWITCH PUSH		EA	1
13	8	PAHZZ	5930-01-014-3213	25778	359051	SWITCH,ROTARY		EA	1
13	9	PAHZZ	5905-00-552-5476	81349	RV4NAYS254A	RESISTOR,VARIABLE,N		EA	1
13	10	PAHZZ	5905-00-539-4900	81349	RV4NAYS503A	RESISTOR,VARIABLE,N		EA	1
13	11	PAHZZ	5905-00-644-6693	81349	RV4NAYS104A	RESISTOR,VARIABLE,N		EA	1
13	12	PAHZZ	5905-00-556-3350	81349	RV4NAYS103A	RESISTOR,VARIABLE,N		EA	1
13	13	PAHZZ	5355-00-990-1922	96906	MS91528-1F2G	KNOB		EA	7
13	14	PAHZZ		81349	UG625/4	CONNECTOR BNC		EA	4
13	15	XDHZZ		25778	201008	WINDOW PANEL		EA	1
13	16	PAHZZ	5305-00-958-5483	96906	MS35190-221	SCREW,MACHINE		EA	4
13	17	XAHZZ		99813	AP1S35D	BEARING,PANEL		EA	3
13	18	PAOZZ	5355-00-616-7669	96906	MS91528-2D2B	KNOB		EA	2
13	19	PAHZZ	5905-01-007-9281	80294	3852A-162-104A	RESISTOR,VARIABLE,N		EA	1
13	20	PAHZZ	5905-00-192-3987	81349	RC20GF104K	RESISTOR,FIXED,COMP		EA	1
13	21	PAHZZ		81349	RN65D6294F	RESISTOR,FIXED,FILM		EA	1
13	22	PAHZZ	5355-00-256-7753	99813	AK5164X-1	COUPLING,INSULATED,		EA	1
13	23	PAHZZ	5940-00-405-2175	80063	SM-B-603975	TERMINAL,LUG		EA	1
13	24	PAHZZ	5355-00-523-8278	96906	MS91528-4S2B	KNOB		EA	1
13	25	PAHZZ	5930-00-655-1508	96906	MS25100-23	SWITCH,TOGGLE		EA	1
13	26	PAHZZ	5910-00-542-7570	56289	C023A501P503Z	CAPACITOR,FIXED,CER		EA	2
13	27	PAHZZ	5940-00-815-2093	96906	MS77068-3	TERMINAL,LUG		EA	1
13	28	XDHZZ		28520	6P-4	SUPPORT,SPECIAL,VIB		EA	1
13	29	PAHZZ		25778	363914	NUT		EA	1
13	30	PAHZZ	6150-00-834-6804	70903	17408	CABLE ASSEMBLY,POWE		EA	1
13	31	PAHZZ		81349	LH74LC13WT	LAMPHOLDER		EA	1
13	32	PAOZZ		01002	NE-2	LAMP,INCANDESCENT		EA	1
13	33	PAHZZ		71400	HKP-3AG	FUSE HOLDER		EA	1
13	34	PAOZZ	5920-00-228-7882	81349	F02B250V2A	FUSE,CARTRIDGE		EA	1
13	35	PAHZZ		25778	361105	METER		EA	1
13	36	XAHZZ		08730	NP-2	HANDLE ROUND		EA	2
13	37	PAHZZ		08730	NP-F	FERRULE		EA	4
13	38	XAHZZ		96906	MS36191-55	SCREW MACHINE		EA	4

TM11-6625-2952-24P  
SECTION IV  
NATIONAL STOCK NUMBER AND PART NUMBER INDEX

STOCK NUMBER	FIGURE NO	ITEM NO	STOCK NUMBER	FIGURE NO	ITEM NO
5910-00-008-7057	4	52	5961-00-199-6008	9	6
5910-00-010-8666	10	14	5935-00-222-9828	4	59
5310-00-045-3299	4	37	5920-00-228-7882	13	34
5310-00-045-3299	12	12	5962-00-232-3945	6	28
5310-00-045-3299	13	4	5961-00-241-3410	10	27
5325-00-050-2862	4	23	5910-00-241-6513	10	24
5310-00-050-9105	4	18	5905-00-244-7911	7	19
5305-00-054-5649	12	26	5905-00-247-8690	8	34
5305-00-054-5651	4	8	5905-00-250-4797	10	50
5305-00-054-6651	10	3	5905-00-252-1047	6	33
5305-00-059-4550	4	10	5905-00-252-1047	8	33
5305-00-059-4568	4	1	5355-00-256-7753	13	22
5961-00-067-3957	7	15	5905-00-256-8854	11	46
5310-00-080-6004	12	13	5905-00-261-7326	10	49
5910-00-099-1507	8	26	5340-00-266-0763	3	2
5905-00-104-5755	6	39	5905-00-279-1883	11	42
5905-00-104-5755	8	39	5905-00-279-2644	6	35
5961-00-105-7731	9	14	5905-00-279-2675	11	43
5905-00-105-7764	6	44	5325-00-282-6633	6	7
5905-00-105-7764	8	44	5325-00-282-6633	7	5
5905-00-105-7764	10	43	5325-00-282-6633	8	7
5905-00-106-1282	6	41	5325-00-282-6633	11	12
5905-00-106-1282	8	41	5960-00-284-4352	4	62
5961-00-106-3698	10	26	5905-00-295-3410	9	18
5905-00-110-0196	10	37	5905-00-295-3410	11	50
5905-00-110-0388	10	40	5905-00-335-8855	10	34
5905-00-110-7620	6	36	5962-00-355-4138	10	58
5905-00-110-7620	8	35	5962-00-369-7607	10	59
5905-00-110-7620	10	33	5961-00-400-6267	7	8
5905-00-110-7620	10	35	5940-00-405-2175	13	23
5905-00-110-7620	11	39	5305-00-405-8960	11	9
5905-00-111-4750	10	36	5905-00-410-0298	6	34
5905-00-111-4858	6	45	5905-00-410-0298	8	36
5905-00-111-4858	8	45	5910-00-449-0009	10	10
5905-00-111-4858	9	21	5961-00-455-4441	6	11
5905-00-111-8357	6	37	5961-00-455-4441	8	11
5905-00-111-8357	11	49	5961-00-494-5023	7	14
5910-00-113-5475	10	22	5961-00-494-5023	8	29
5905-00-114-0711	10	41	5961-00-494-5023	9	13
5905-00-114-0711	10	44	5961-00-494-5023	11	32
5905-00-114-5416	6	38	5355-00-523-8278	13	24
5905-00-114-5416	8	38	5905-00-539-4900	13	10
5961-00-115-8168	7	16	5910-00-542-7570	13	26
5905-00-116-8554	10	53	5905-00-552-2859	4	66
5905-00-116-8555	11	40	6625-00-552-5395	8	28
5905-00-116-8566	8	37	5905-00-552-5476	11	22
5905-00-116-8566	9	20	5905-00-552-5476	13	9
5905-00-118-4559	10	55	5905-00-552-6242	6	43
5905-00-119-3503	10	45	5905-00-556-3350	13	12
5905-00-119-3503	10	51	5305-00-558-4889	4	60
5905-00-119-3503	11	44	5310-00-559-0070	4	47
5905-00-120-9154	10	47	5310-00-559-0070	12	3
5905-00-121-9861	10	38	5305-00-576-2273	4	3
5910-00-124-0659	11	51	5310-00-579-0079	4	12
5905-00-126-6683	9	23	5310-00-579-0079	6	15
5905-00-126-6683	10	57	5310-00-579-0079	8	15
5905-00-141-0717	10	42	5310-00-579-0079	11	18
5905-00-141-0717	10	54	5310-00-579-0079	12	17
5905-00-141-0717	11	45	5355-00-616-7669	13	18
5905-00-141-1183	10	48	5310-00-622-9531	4	11
5905-00-141-1183	11	48	5310-00-622-9531	11	19
5905-00-155-0081	9	22	5945-00-642-5318	4	61
5940-00-159-1290	4	54	5910-00-643-9355	6	25
6145-00-160-4775	6	9	5910-00-643-9355	8	25
6145-00-160-4775	7	9	5905-00-644-6693	11	20
6145-00-160-4775	8	9	5905-00-644-6693	13	11
6145-00-160-4775	11	14	5930-00-655-1508	13	25
5310-00-167-0721	9	10	6145-00-661-0191	5	1
5310-00-167-0823	4	36	5310-00-680-6627	4	50
5310-00-167-0832	4	51	5310-00-680-6627	5	2
5310-00-167-0832	5	5	5310-00-680-6627	9	11
5310-00-167-0832	9	9	5340-00-682-1617	12	11
5310-00-167-0832	12	18	5910-00-682-2543	4	49
5310-00-176-8135	13	5	5905-00-689-4716	10	52
5940-00-177-7973	8	13	5975-00-727-5153	4	44
5905-00-184-7703	10	46	5310-00-765-3197	6	8
5905-00-192-3987	10	56	5310-00-765-3197	7	6
5905-00-192-3987	13	20	5310-00-765-3197	8	8
5310-00-193-7577	4	7	5310-00-765-3197	11	13
5310-00-193-7577	11	8	5961-00-804-7548	8	31



TM11-6625-2952-24P  
SECTION IV  
NATIONAL STOCK NUMBER AND PART NUMBER INDEX

STOCK NUMBER	FIGURE NO	ITEM NO	STOCK NUMBER	FIGURE NO	ITEM NO
5310-00-809-8546	3	4	5305-00-984-4988	4	30
5905-00-810-5232	6	42	5305-00-984-4988	12	16
5905-00-810-5232	8	42	5305-00-984-4989	5	6
5940-00-815-2093	13	27	5305-00-984-4989	6	14
5905-00-816-8554	6	40	5305-00-984-4989	8	14
5905-00-816-8554	8	40	5305-00-984-4989	9	8
5905-00-816-8554	10	39	5305-00-984-6193	12	2
5961-00-821-2309	9	17	5910-00-985-0457	11	25
5940-00-822-7268	4	26	5961-00-985-9073	6	21
5940-00-827-2653	4	55	5961-00-985-9073	8	21
5940-00-827-2653	6	13	5961-00-985-9073	11	38
5340-00-827-6389	5	4	5355-00-990-1922	13	13
5340-00-827-6389	12	15	5305-00-990-6444	4	53
5961-00-828-0719	10	31	5910-00-994-6910	9	5
5961-00-828-0719	11	36	5910-00-994-6910	11	29
6150-00-834-6804	13	30	5930-01-006-6214	12	7
5961-00-842-9864	6	31	5935-01-006-6254	12	10
5961-00-842-9864	8	32	6625-01-006-6255	12	14
5961-00-847-9782	10	30	6625-01-006-6343	2	7
5961-00-850-0563	11	30	6625-01-006-6344	2	4
5961-00-854-8470	11	34	6625-01-006-6345	2	6
5961-00-865-8625	9	15	5960-01-006-6507	12	22
5961-00-866-5454	6	32	5961-01-006-6511	11	31
5961-00-880-2938	11	33	5910-01-007-1552	6	27
5910-00-881-9379	6	23	5910-01-007-1552	8	27
5910-00-881-9379	8	23	5905-01-007-9281	13	19
5910-00-881-9379	11	26	6625-01-009-0656	12	25
5305-00-889-2998	4	58	5355-01-013-4026	12	5
5305-00-889-3000	4	4	5930-01-014-3213	13	8
5305-00-889-3001	4	45	5355-01-014-4382	12	6
5961-00-892-8706	6	22	5905-01-017-1169	12	8
5961-00-892-8706	8	22	5950-01-020-9704	4	46
5961-00-893-6763	9	16	5910-01-026-5812	7	13
5961-00-894-4326	7	17	5910-01-026-5812	10	18
5961-00-901-4862	9	12	5940-01-028-8916	11	6
5961-00-901-4862	11	37	5910-01-030-1771	10	23
5910-00-914-1379	10	19	5905-01-038-0657	6	19
5310-00-933-8118	10	5	5930-01-038-2630	4	48
5310-00-934-9739	4	5	5905-01-042-8808	11	47
5310-00-934-9747	6	16	5961-01-044-4173	6	29
5310-00-934-9747	8	16	5961-01-044-4173	10	28
5310-00-934-9748	10	6	5910-01-049-6560	10	17
5310-00-934-9757	4	38	6625-01-077-4527	2	9
5961-00-938-1135	10	25	5910-01-092-9392	10	11
5961-00-944-3832	6	30	5910-01-092-9395	10	21
5961-00-944-3832	8	30	5950-01-095-3168	2	5
5310-00-950-1310	4	20	6625-01-095-3245	2	8
5310-00-951-4679	11	7	5950-01-096-1824	4	56
5310-00-951-4679	12	28	5910-01-097-8623	7	11
5305-00-957-6264	4	14	5305-01-098-3656	3	5
5305-00-958-5453	4	22	5305-01-098-3657	3	3
5305-00-958-5477	13	3	5310-01-099-7944	12	27
5305-00-958-5477	13	6	5905-01-101-7745	8	19
5305-00-958-5483	13	16	5325-01-102-2391	11	11
5305-00-984-4983	4	25	5961-01-110-4395	10	29
5305-00-984-4984	4	13	5961-01-110-4395	11	35
5305-00-984-4984	11	17			

FSCM	PART NUMBER	FIGURE NO	ITEM NO	FSCM	PART NUMBER	FIGURE NO	ITEM NO
99813	AK5164X-1	13	22	81349	CM05ED511J	10	16
88044	AN340-8	13	5	81349	CM05ED511S	6	24
88044	AN935-8L	12	12	24138	CM1600-2A	11	27
81350	AN960-6L	4	51	81349	CSR13E106K	10	22
81350	AN960-6L	9	9	56289	C023A501P503Z	13	26
81350	AN960-6L	12	18	73445	C437AR/H250	9	5
96906	AN960-6L	5	5	73445	C437AR/H250	11	29
88044	AN960-816	4	36	71590	DD102	10	24
99813	AP1S35D	13	17	71590	DD502G	6	25
56289	A1C92A10	11	28	71590	DD502G	8	25
57771	A355	6	7	12674	EMW2852-20-450	6	17
57771	A355	7	5	12674	EMW2852-40-350	8	17
57771	A355	8	7	12674	EMW2852-40-350	9	3
57771	A355	11	12	24138	EM103K101	10	20
11237	BF51312	11	47	24138	EM22-1A	10	17
24138	CD104Z050F	10	15	32158	FTE-15	8	3
81349	CMR05E200J0DR	10	23	32158	FTE15	11	4
81349	CM05ED511J	8	24	81349	F02B250V2A	13	34

## NATIONAL STOCK NUMBER AND PART NUMBER INDEX

FSCM	PART NUMBER	FIGURE NO	ITEM NO	FSCM	PART NUMBER	FIGURE NO	ITEM NO
71400	HKP-3AG	13	33	96906	MS35649-244	10	6
81349	JAN1N3070	11	34	96906	MS35649-262	6	16
81349	JAN1N4148	10	25	96906	MS35649-262	8	16
81349	JAN1N4383	9	14	96906	MS35649-282	4	38
81349	JAN1N751A	9	17	96906	MS36191-55	13	38
81349	JAN1N821	6	32	96906	MS51795-804	10	4
81349	JAN1N914	6	31	96906	MS51957-15	12	26
81349	JAN2N3055	9	6	96906	MS51957-27	10	3
81349	JAN2N3638	9	12	96906	MS77067-1	8	13
81349	JAN2N3638	11	37	96906	MS77068-2	4	55
81349	JAN2N3904	10	29	96906	MS77068-2	6	13
81349	JAN2N3904	11	35	96906	MS77068-3	13	27
07263	KM9-30-100	11	23	96906	MS91528-1F2G	13	13
81349	LH74LC13WT	13	31	96906	MS91528-2D2B	13	18
04713	MC14001CP	10	58	96906	MS91528-4S2B	13	24
04713	MJE-340	10	31	81349	M12883-03-01	4	59
04713	MJE340	11	36	81349	M17/29-RG59	5	1
04713	MR250-2	6	29	81349	M38510/00401BCB	10	59
04713	MR250-2	10	28	81349	M39014/01-1357	10	14
04713	MR991	7	14	81349	M39014/01-1575	11	51
04713	MR991	8	29	96906	NAS620-6	4	11
04713	MR991	9	13	96906	NAS620-6	11	19
04713	MR991	11	32	01002	NE-2	13	32
96906	MS-2-14-110-N-B	10	8	08730	NP-F	13	37
96906	MS15795-203	11	7	08730	NP-2	13	36
96906	MS21919-DG-12	12	11	14655	PKM16S47	11	25
96906	MS24584-23	4	25	30039	PMG105K251	10	11
96906	MS25082-1	4	50	24138	PMG472K631	10	13
96906	MS25082-1	5	2	30039	PMG474K251	10	21
96906	MS25082-1	9	11	18915	PR211-7	4	26
96906	MS25100-23	13	25	00656	P8292ZN30	6	23
96906	MS27183-14	12	13	00656	P8292ZN30	8	23
96906	MS27183-3	12	28	00656	P8292ZN30	11	26
96906	MS27183-4	4	20	81349	RCR07G103JS	10	39
96906	MS27183-41	6	8	81349	RCR07G101JS	10	48
96906	MS27183-41	7	6	81349	RCR07G101JS	11	48
96906	MS27183-41	8	8	81349	RCR07G102JS	6	36
96906	MS27183-41	11	13	81349	RCR07G102JS	8	35
96906	MS27183-8	3	4	81349	RCR07G102JS	10	33
96906	MS35190-221	13	16	81349	RCR07G102JS	10	35
96906	MS35190-225	4	14	81349	RCR07G102JS	11	39
96906	MS35190-235	4	10	81349	RCR07G104JS	10	40
96906	MS35190-236	4	22	81349	RCR07G105JS	10	53
96906	MS35190-253	4	1	81349	RCR07G153JS	11	40
96906	MS35190-254	13	3	81349	RCR07G222JS	6	44
96906	MS35190-254	13	6	81349	RCR07G222JS	8	44
96906	MS35191-271	12	4	81349	RCR07G222JS	10	43
96906	MS35206-216	4	58	81349	RCR07G271JS	10	45
96906	MS35206-227	4	13	81349	RCR07G271JS	10	51
96906	MS35206-227	11	17	81349	RCR07G271JS	11	44
96906	MS35206-228	4	30	81349	RCR07G301JS	10	36
96906	MS35206-228	12	16	81349	RCR07G332JS	9	23
96906	MS35206-229	5	6	81349	RCR07G332JS	10	57
96906	MS35206-229	6	14	81349	RCR07G333JS	10	55
96906	MS35206-229	8	14	81349	RCR07G471JS	10	47
96906	MS35206-229	9	8	81349	RCR07G472JS	10	41
96906	MS35206-230	4	4	81349	RCR07G472JS	10	44
96906	MS35206-231	4	45	81349	RCR07G473JS	10	42
96906	MS35206-245	12	2	81349	RCR07G473JS	10	54
96906	MS35207-261	4	53	81349	RCR07G473JS	11	45
96906	MS35223-13	11	9	81349	RCR20G10R0JS	6	39
96906	MS35223-14	4	60	81349	RCR20G10R0JS	8	39
96906	MS35239-35	4	3	81349	RCR20G102JS	10	37
96906	MS35289-53	4	34	81349	RCR20G223JS	6	41
96906	MS35333	5	3	81349	RCR20G223JS	8	41
96906	MS35333-36	4	7	81349	RCR20G274JS	6	38
96906	MS35333-36	11	8	81349	RCR20G274JS	8	38
96906	MS35333-37	4	12	81349	RCR20G471JS	6	45
96906	MS35333-37	6	15	81349	RCR20G471JS	8	45
96906	MS35333-37	8	15	81349	RCR20G471JS	9	21
96906	MS35333-37	11	18	81349	RCR20G680JS	8	37
96906	MS35333-37	12	17	81349	RCR20G680JS	9	20
96906	MS35333-38	4	47	81349	RCR20G681JS	6	37
96906	MS35333-38	12	3	81349	RCR20G681JS	11	49
96906	MS35333-41	9	10	81349	RCR32G102JS	10	38
96906	MS35338-135	10	5	81349	RCR32G114JS	8	34
96906	MS35338-42	4	37	81349	RCR32G274JS	6	33
96906	MS35338-42	13	4	81349	RCR32G274JS	8	33
96906	MS35649-242	4	5	81349	RCR32G682JS	7	19

## NATIONAL STOCK NUMBER AND PART NUMBER

FSCM	PART NUMBER	FIGURE NO	ITEM NO	FSCM	PART NUMBER	FIGURE NO	ITEM NO
81349	RCR42G103JS	10	46	25778	100440	1	1
81349	RCR42G272JS	9	22	25778	100443	12	10
81349	RCR42G331JS	10	52	25778	100444	12	14
81349	RC07GF103K	6	40	25778	100445	12	25
81349	RC07GF103K	8	40	25778	100446	12	19
81349	RC20GF104K	10	56	25778	100447	12	24
81349	RC20GF104K	13	20	25778	100448	12	8
81349	RC20GF335J	11	42	25778	100449	12	7
81349	RC20GF473K	9	18	25778	100450	12	6
81349	RC20GF473K	11	50	25778	100451	12	5
81349	RC32GF114J	6	35	25778	100452	12	9
81349	RC42GF152K	6	34	25778	100453	1	2
81349	RC42GF152K	8	36	25778	100454	12	21
81349	RC42GF333K	11	43	25778	100514	4	43
81349	RC42GF563K	11	41	25778	100515	12	29
81349	RE75G4R34	4	57	25778	100516	4	65
81349	RNR60D8453	10	32	25778	101548	2	8
81349	RN25B4873F	8	43	25778	101797	2	9
81349	RN60C1272F	6	42	70563	115N060T	4	61
81349	RN60C1272F	8	42	91833	1237	9	2
81349	RN65D6294F	13	21	91833	1238	6	2
81349	RN75B9533F	6	43	91833	1238	7	2
81349	RV4NAYS103A	13	12	91833	1238	8	2
81349	RV4NAYS104A	11	20	83330	1414-10	4	54
81349	RV4NAYS104A	13	11	91833	1701	4	68
81349	RV4NAYS254A	11	22	70903	17408	13	30
81349	RV4NAYS254A	13	9	80131	2N3053	6	21
81349	RV4NAYS501A	4	66	80131	2N3053	8	21
81349	RV4NAYS503A	13	10	80131	2N3053	11	38
81349	RW47V1271F	7	18	80131	2N3904	6	22
81349	RW74042R4F	9	19	80131	2N3904	8	22
81349	RW7444950F	9	24	80131	2N3905	10	30
34148	SL20169	6	28	80131	2N6027	10	26
80063	SM-B-603975	13	23	08484	20	12	23
04937	ST778-1F	4	64	25778	200491	7	1
24138	TAK100TT250	7	11	25778	200840	6	1
24138	TDA1000M16T	7	13	25778	200841	6	12
24138	TDA1000M16T	10	18	25778	200841	8	12
92194	TFT-200/20	8	10	25778	200842	8	1
81349	TS103U03	4	62	25778	200843	9	7
59730	TY-533M	4	42	25778	200844	9	1
59730	TY523M	4	44	25778	200846	11	1
53421	T50R	6	18	25778	200848	7	7
53421	T50R	7	12	25778	200849	4	39
53421	T50R	8	18	25778	200959	4	41
53421	T50R	9	4	25778	200960	4	31
53421	T50R	11	24	25778	200961	4	40
81349	UG260DU	5	7	25778	200962	4	28
81349	UG625/4	13	14	25718	200963	4	35
12697	U39-300	11	46	25778	200968	13	1
90201	VR3	4	49	25778	200972	4	27
14655	WMF1D27J	10	19	25778	201008	13	15
14655	WMF1D56	10	10	25778	202372	10	7
09023	WMF1556	10	9	25778	202697	4	15
84411	X463UW474550W2	8	27	25778	202697-1	4	16
76385	Z2210	4	23	25778	202698	4	33
31781	007023041000001	10	2	25778	202699	4	24
31781	007024041263001	4	9	25778	202966	10	1
98291	011-6809-00-0209	6	3	25778	203077	4	2
80131	1N2970B	7	17	25778	203078	4	6
80131	1N3005A	7	8	25778	203079	4	17
80131	1N3024	9	16	25778	203136	11	16
81349	1N4003	11	33	25778	203146	4	32
81349	1N4372	11	31	25778	203147	4	29
80131	1N4383	6	30	25778	203200	4	21
80131	1N4383	8	30	25778	203273	2	1
80131	1N4750A	11	30	25778	203316	4	19
80131	1N5234A	10	27	77900	2124-20-00	4	67
80131	1N5400	7	16	83330	2322	4	18
80131	1N821	8	31	70485	251	3	2
80131	1N965A	7	15	92194	298	6	9
80131	1N971B	9	15	92194	298	7	9
25778	100325	2	3	92194	298	8	9
25778	100326	12	1	92194	298	11	14
25778	100327	12	20	12673	32MPC1004G05	8	26
25778	100423	2	5	12673	32MPC1004J05	6	26
25778	100432	2	4	12673	32MPC4703K05	6	27
25778	100433	2	6	32997	3389-P-1-502	10	50
25778	100434	2	7	80294	3389P-1-102	10	49
25718	100439	2	2	80294	3389P-1-503	10	34

## NATIONAL STOCK NUMBER AND PART NUMBER INDEX

FSCM	PART NUMBER	FIGURE NO	ITEM NO	FSCM	PART NUMBER	FIGURE NO	ITEM NO
25778	348055	12	22	31827	5-3-1	11	11
25778	351050	4	46	56289	5HK D10	10	12
25778	354049	4	56	31827	6-4-1	6	5
25778	359050	13	7	31827	6-4-1	7	3
25778	359051	13	8	31827	6-4-1	8	5
25778	359080	4	48	31827	6-4-1	11	10
25778	361105	13	35	72136	6DP5-224	4	63
25778	3633663	3	5	28520	6P-4	13	28
25778	363662	3	3	12040	741C	8	28
25778	363674	12	27	88245	766	11	6
25778	363914	13	29	83330	773	5	4
80294	3852A-162-104A	13	19	83330	773	12	15
80294	3852A-282-251A	6	19	99392	91C50HC392	4	52
80294	3852A-282-254A	8	19	83330	93-2001	6	4
02735	40318	6	11	83330	93-2001	8	4
02735	40318	8	11	83330	93-2001	11	3
31827	5-3-1	6	6	83330	93-2014	11	5
31827	5-3-1	8	6				

RECOMMENDED CHANGES TO EQUIPMENT TECHNICAL PUBLICATIONS



THEN... JOT DOWN THE DOPE ABOUT IT ON THIS FORM. CAREFULLY TEAR IT OUT, FOLD IT AND DROP IT IN THE MAIL!

SOMETHING WRONG WITH THIS PUBLICATION?

FROM: (PRINT YOUR UNIT'S COMPLETE ADDRESS)  
 Commander  
 Stateside Army Depot  
 ATTN: AMSTA-US  
 Stateside, N.J. 07703

DATE SENT 10 July 1975

PUBLICATION NUMBER TM 11-5840-340-12	PUBLICATION DATE 23 Jan 74	PUBLICATION TITLE Radar Set AN/PRC-76
---	-------------------------------	--

BE EXACT... PIN-POINT WHERE IT IS				IN THIS SPACE TELL WHAT IS WRONG AND WHAT SHOULD BE DONE ABOUT IT:
PAGE NO.	PARA-GRAPH	FIGURE NO.	TABLE NO.	
2-25	2-28			<p>Recommend that the installation antenna alignment procedure be changed throughout to specify a 2° IFF antenna lag rather than 1°.</p> <p>REASON: Experience has shown that with only a 1° lag, the antenna servo system is too sensitive to wind gusting in excess of 25 knots, and has a tendency to rapidly accelerate and decelerate as it hunts, causing strain to the drive train. Hunting is minimized by adjusting the lag to 2° without degradation of operation.</p>
3-10	3-3		3-1	<p>Item 5, Function column. Change "2 db" to "3db."</p> <p>REASON: The adjustment procedure the the TRANS POWER FAULT indicator calls for a 3 db (500 watts) adjustment to light the TRANS POWER FAULT indicator.</p>
5-6	5-8			<p>Add new step f.1 to read, "Replace cover plate removed in step e.1, above."</p> <p>REASON: To replace the cover plate.</p>
		F03		<p>Zone C 3. On J1-2, change "+24 VDC to "+5 VDC."</p> <p>REASON: This is the output line of the 5 VDC power supply. +24 VDC is the input voltage.</p>

TEAR ALONG PERFORATED LINE

PRINTED NAME, GRADE OR TITLE, AND TELEPHONE NUMBER  
 SSG I. M. DeSpirito 999-1776

SIGN HERE



RECOMMENDED CHANGES TO EQUIPMENT TECHNICAL PUBLICATIONS



THEN...JOT DOWN THE DOPE ABOUT IT ON THIS FORM. CAREFULLY TEAR IT OUT, FOLD IT AND DROP IT IN THE MAIL.

**SOMETHING WRONG WITH THIS PUBLICATION?**

FROM: (PRINT YOUR UNIT'S COMPLETE ADDRESS)

DATE SENT

PUBLICATION NUMBER

TM 11-6625-2952-24P

PUBLICATION DATE

7 MAY 1982

PUBLICATION TITLE Generator, Signal

SG-1174/U

BE EXACT PIN-POINT WHERE IT IS

PAGE NO.

PARA-GRAPH

FIGURE NO.

TABLE NO.

IN THIS SPACE TELL WHAT IS WRONG AND WHAT SHOULD BE DONE ABOUT IT:

TEAR ALONG PERFORATED LINE

PRINTED NAME GRADE OR TITLE AND TELEPHONE NUMBER

SIGN HERE

DA FORM 2028-2  
1 JUL 79

PREVIOUS EDITIONS ARE OBSOLETE

P.S.--IF YOUR OUTFIT WANTS TO KNOW ABOUT YOUR RECOMMENDATION MAKE A CARBON COPY OF THIS AND GIVE IT TO YOUR HEADQUARTERS.

FILL IN YOUR  
UNIT'S ADDRESS

FOLD BACK

DEPARTMENT OF THE ARMY

\_\_\_\_\_  
\_\_\_\_\_

OFFICIAL BUSINESS  
PENALTY FOR PRIVATE USE \$300

POSTAGE AND FEES PAID  
DEPARTMENT OF THE ARMY  
DOD 314



TEAR ALONG PERFORATED LINE

Commander  
US Army Communications-  
Electronics Command  
ATTN: DRSEL-ME-MQ  
Fort Monmouth, New Jersey 07703



RECOMMENDED CHANGES TO EQUIPMENT TECHNICAL PUBLICATIONS

SOMETHING WRONG WITH THIS PUBLICATION?



THEN...JOT DOWN THE DOPE ABOUT IT ON THIS FORM. CAREFULLY TEAR IT OUT, FOLD IT AND DROP IT IN THE MAIL.

FROM: (PRINT YOUR UNIT'S COMPLETE ADDRESS)

DATE SENT

PUBLICATION NUMBER  
TM 11-6625-2952-24P

PUBLICATION DATE  
7 MAY 1982

PUBLICATION TITLE Generator, Signal  
SG-1174/U

BE EXACT PIN-POINT WHERE IT IS

PAGE NO.	PARA-GRAPH	FIGURE NO.	TABLE NO.

IN THIS SPACE TELL WHAT IS WRONG AND WHAT SHOULD BE DONE ABOUT IT:

TEAR ALONG PERFORATED LINE

PRINTED NAME GRADE OR TITLE AND TELEPHONE NUMBER

SIGN HERE

DA FORM 2028-2  
1 JUL 79

PREVIOUS EDITIONS ARE OBSOLETE

P.S.--IF YOUR OUTFIT WANTS TO KNOW ABOUT YOUR RECOMMENDATION MAKE A CARBON COPY OF THIS AND GIVE IT TO YOUR HEADQUARTERS.

FILL IN YOUR  
UNIT'S ADDRESS

FOLD BACK

DEPARTMENT OF THE ARMY

\_\_\_\_\_  
\_\_\_\_\_

OFFICIAL BUSINESS  
PENALTY FOR PRIVATE USE \$300

POSTAGE AND FEES PAID  
DEPARTMENT OF THE ARMY  
DOD 314



TEAR ALONG PERFORATED LINE

Commander  
US Army Communications-  
Electronics Command  
ATTN: DRSEL-ME-MQ  
Fort Monmouth, New Jersey 07703

RECOMMENDED CHANGES TO EQUIPMENT TECHNICAL PUBLICATIONS



THEN...JOT DOWN THE DOPE ABOUT IT ON THIS FORM. CAREFULLY TEAR IT OUT, FOLD IT AND DROP IT IN THE MAIL.

SOMETHING WRONG WITH THIS PUBLICATION?

FROM: (PRINT YOUR UNIT'S COMPLETE ADDRESS)

DATE SENT

PUBLICATION NUMBER

TM 11-6625-2952-24P

PUBLICATION DATE

7 MAY 1982

PUBLICATION TITLE Generator, Signal

SG-1174/U

BE EXACT PIN-POINT WHERE IT IS

PAGE NO.	PARA-GRAPH	FIGURE NO.	TABLE NO.
----------	------------	------------	-----------

IN THIS SPACE TELL WHAT IS WRONG AND WHAT SHOULD BE DONE ABOUT IT:

TEAR ALONG PERFORATED LINE

PRINTED NAME GRADE OR TITLE AND TELEPHONE NUMBER

SIGN HERE

DA FORM 2028-2 JUL 79

PREVIOUS EDITIONS ARE OBSOLETE

P.S.--IF YOUR OUTFIT WANTS TO KNOW ABOUT YOUR RECOMMENDATION MAKE A CARBON COPY OF THIS AND GIVE IT TO YOUR HEADQUARTERS.

FILL IN YOUR  
UNIT'S ADDRESS

FOLD BACK

DEPARTMENT OF THE ARMY

\_\_\_\_\_  
\_\_\_\_\_

OFFICIAL BUSINESS  
PENALTY FOR PRIVATE USE \$300

POSTAGE AND FEES PAID  
DEPARTMENT OF THE ARMY  
DOD 314



TEAR ALONG PERFORATED LINE

Commander  
US Army Communications-  
Electronics Command  
ATTN: DRSEL-ME-MQ  
Fort Monmouth, New Jersey 07703

By Order of the Secretary of the Army:

Official:

**ROBERT M. JOYCE**  
*Brigadier General United States Army*  
*The Adjutant General*

**E. C. MEYER**  
*General, United States Army*  
*Chief of Staff*





DEPARTMENT OF THE ARMY  
US ARMY AG PUBLICATIONS CENTER  
1655 WOODSON ROAD  
ST. LOUIS, MISSOURI 63114

OFFICIAL BUSINESS  
PENALTY FOR PRIVATE USE \$300

DEPARTMENT OF THE ARMY  
US ARMY AG PUBLICATIONS CENTER  
1655 WOODSON ROAD  
ST. LOUIS, MISSOURI 63114

OFFICIAL BUSINESS  
PENALTY FOR PRIVATE USE, \$300

CDR  
USA DARCOM MAT READ SF  
ACTV ATTN DRXMD-MF  
LEXINGTON KY

DA PUBLICATION/FORM NUMBER		
TM 11-6625-2952-24P		
LOCATION	QUANTITY	UNIT OF
F2485	1	EA
PKG SIZE	ITEM NO.	BULK/Rcpt DATE
	355093	N8311

TAGO FORM 4-26a, 1 SEP 78

PREVIOL